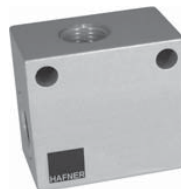


SE 501

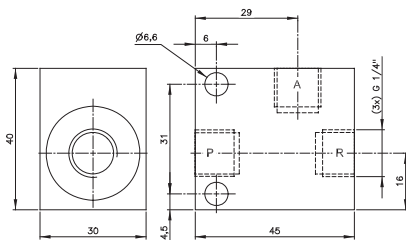


Quick-exhaust valve series which can also be used as non-return valve.

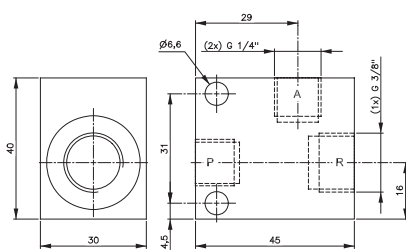
If used as a non-return valve please plug port R. Open from P to A, closed from A to P.

Temperature range: -20° C to +80° C

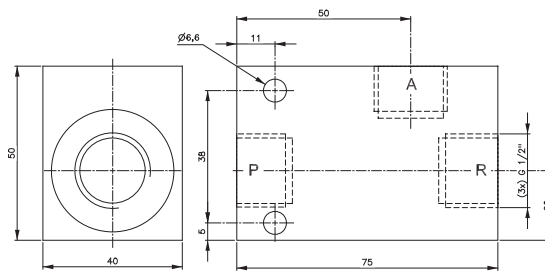
Stainless steel version as well as low temperature version available on request.



SE 801



SE 8101



SE 121

Type	Port size A + P	Port size R	Air flow from A to R	Operating press.	Weight
SE 501	G 1/8"	G 1/8"	564 l/min	0,3 - 10 bar	0,06 kg
SE 801	G 1/4"	G 1/4"	1188 l/min	0,2 - 10 bar	0,18 kg
SE 8101	G 1/4"	G 3/8"	1188 l/min	0,2 - 10 bar	0,18 kg
SE 121	G 1/2"	G 1/2"	3600 l/min	0,5 - 10 bar	0,26 kg