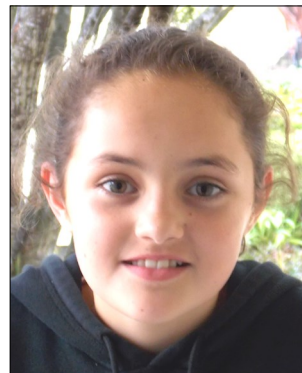


# KAI IWI SCHOOL

## NEWSFLASH!

908 SH3, R.D. 4,  
WANGANUI  
Ph: 06 3429-823  
Cell: 027 392 7142  
Fax: 06 3429-827

E-mail: [office@kaiiwi.school.co.nz](mailto:office@kaiiwi.school.co.nz)  
Website: [www.kaiiwi.school.co.nz](http://www.kaiiwi.school.co.nz)



**Week 6, Term 1**

**9th March 2017**

### *PRINCIPAL'S COMMENT*

Hi Everyone, Tena Koutou Katoa,

#### **Bike Track**

It was great to see a photo of Kai Iwi Kids enjoying the bike track in the Chronicle this week.

#### **Swimming**

Yesterday was the West Cluster Swimming Sports day at the Splash Centre with all eight schools attending.

It was great day with some really good results from many of our children and the ones that performed well have been chosen for the Super Six swimming competition on Friday 17<sup>th</sup> March, at 10:30am until 1pm at the Splash Centre in Whanganui.

Our swimming pool is still open but for how much longer really depends on our Autumn weather.

#### **Cricket**

Tomorrow, weather permitting, three cricket teams will be travelling to Waverley School for a cricket tournament with schools from around the district.

We will be sending one year 2/3 team and two year 4-6 teams.

The tournament starts at 9:30 so we need to leave no later than 9:00am, so if your child is in one of the teams they need to be at school in their uniforms on time or they may miss out on going. It should finish between 1:30pm and 2:00pm.

#### **Badges**

Last week I presented badges in a special assembly to our Bus monitors, Librarians, and House leaders, and I'm waiting for the Kapa Haka and Choir badges to arrive and then we will present them to the children too.

#### **Uniforms**

If your child does not yet have a uniform or has outgrown the one they have could you please order a new one from the office.

Your child does not have to wear the uniform to school everyday unless they choose to, however, they do need to have a uniform for school trips and sports events.

#### **Maths**

This year we are trialling a new mathematics programme called Prime maths. The books for your children are \$7.50 each and in most classes each child needs two.

This covers all your child's maths books for the year so please make a payment to the school office.

#### **Board of Trustees**

On behalf of our Board of Trustees I would like to take this opportunity to thank Leayne Huirua for her time, skills and knowledge she brought to the board since being co-opted last year, as Leayne resigned last week due to her busy work schedule. Leayne said she enjoyed her time working on the board and meeting all the board members and some parents too and thinks Kai Iwi School is a lovely school with a great future.

Just an up date for our new parents our school Board consists of;

Kerry Terrey (Board Chair)

Carrissa Brown (Deputy Chair)

Bruce Jones

Dinelle Saunders

Helen McDougall

Raylene Harris (Teacher)

Ross Harvey (Principal)

*Continued over*

*Principal's Comment cont'd*

**Remember**, if you have any innovative ideas which you think may be good for our school come in and share them with the teachers or myself as we are encouraging the children to do this and would welcome any parent/community input.

**Have a safe weekend everyone.**

Ross Harvey  
Principal

**TOWN BUS**

The town bus is owned by the school and this is the reason we need to charge for it's use. Usually all seats are booked for permanent users but if there are seats available due to children being away then others may use it at \$3/trip. **HOWEVER** it is necessary to contact Jane at school on the day to ascertain if there is a seat available.

**SCHOOL ACCOUNTS**

Your school account should be attached to this newsletter. The School Donation is \$25/child/term with a maximum of 2 per family. If you wish to pay your child(ren)s School Donation for the whole year and pay before the end of March, then you will qualify for a \$10/child discount. Term 1 (\$25 each) is included in the attached account so just add \$65/child to this account to pay for the whole year which includes this discount. Any confusion please ring me in the office. As we are only a small school these donations really help towards the running of the school, resources, etc. PS I have just realised that I haven't processed Techni fees (\$35) for Year 7 and 8 students, therefore they will be on your next account.

**Wendy**

**MESSAGE FROM OUR DENTAL THERAPIST**

Our therapists are very concerned at the amount of children at our school who are obviously not cleaning their teeth in the morning before coming to school (or possibly day before even!). Please get your child(ren) into the habit of brushing twice a day to avoid dental problems.

**WANTED TO BUY**

Lifestyle Block, 4+ bedrooms, sunny and warm.  
Good garaging and sheds.  
Please phone Heather on  
3429-777 or 027 544 0688



**CRICKET - TOMORROW**

**WAVERLEY PRIMARY SCHOOL**

The following children are involved in a cricket tournament in Waverley tomorrow. All children to wear school uniform (including hat), wear appropriate shoes for playing, bring their lunch and water.



Waverley School will have a **sausage sizzle** available for competitors and spectators. (\$2)

STAR Room:- Connor, Crystal, Levi, Joe, Maddison, Carter.

ROOM 2:- Mitchell, Yuri, Samuel, Te Ariki, Isiah, Rakeinohowhetu, Mason, Oliver (Jones), Bailey.

ROOM 3:- Tamauira, Caleb, Bronson.

**FRIDAY NIGHT CRICKET DRAW:-**

Kai Iwi Gold vs YMCA Field 10

Kai Iwi Black vs Waverley Black & Gold Field 11

**REMINDER**

Have you returned your ORANGE SLIP regarding addresses and phone no.s? If not, please do so ASAP.

**TROPHY CABINET**

Thanks to all the trophy winners for returning their 'silverware'. The new Trophy Cabinet is now all complete with trophies and names displayed. If you come to school, come check it out in the office foyer. Looks great!

