

Greencells are a cost effective cellular containment system manufactured from UV stabilised, coated slit film woven geotextile strips which alternatively stitched to form a continuous honey-comb square mat. This is then filled with a variety of natural materials or concrete and used to stabilise embankments, river profiles, sand dunes, base courses and drainage canals. *Greencells* are available in a range of heights to suit most applications.

SPECIFICATIONS

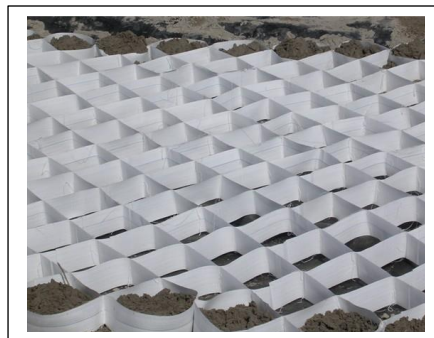
Effective as at: 07.11.2017

Physical Properties:		Units	GC190	Test Method
Composition	Polymer	Coated Polypropylene		
Mass	Coated	g/m ²	190	SANS 10221-2007
Thickness	Under 2 kPa	mm	0.5	SANS 10221-2007
Tensile Strength Ultimate	Warp	kN/m	25	SANS 10221-2007
	Weft	kN/m	22	SANS 10221-2007
Elongation Ultimate	Warp	%	17	SANS 10221-2007
	Weft	%	18	SANS 10221-2007
Seam Strength	(Average)	kN/m	7.0	EN ISO 10319
Elongation	(Average)	%	18	EN ISO 10319
Cell Size *	Sides	mm	212 x 212	STANDARD
	Heights **	mm	75 / 100 / 150 / 250	STANDARD
Panel Size *	Width x Length	m	3 x 10	STANDARD

*** Notes:**

Custom Cell and Panel sizes can be manufactured on request.

Specially perforated cell walls to facilitate drainage are also available on request.



The information contained in this publication is provided in good faith and to the best of our knowledge is true and accurate.

Fibertex South Africa reserves the right to make technical modifications to their products without notice.

KZN: (T) +27 (0)31 736 7100
(E) salesza@fibertex.com

GAUTENG: (T) +27 (0)11 965 0205
(E) tenders@geotextilesafrica.co.za

W CAPE: (T) +27 (0)21 701 3569
(E) adminct@geotextilesafrica.co.za



www.fibertex.com / www.geotextilesafrica.co.za

** GEOTEXTILES • GEOGRIDS • SUBSOIL DRAINAGE PIPE & FITTINGS • GEOCELLS • COMPOSITE DRAINAGE SYTEMS • GABIONS & MATTRESSES
• CUSPATED SHEETS • GEOBAGS • GCLs • GEOMEMBRANE