

SlopeSaver 292

GEOSYNTHETIC SOLUTIONS **

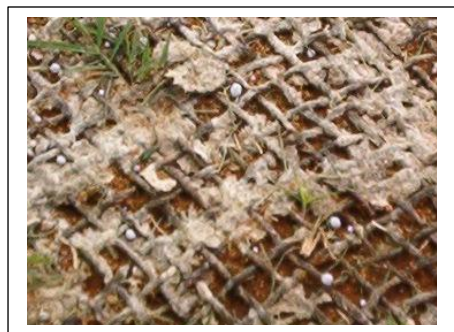


Fibertex
SOUTH AFRICA

SlopeSaver 292 is a biodegradable Geojute commonly used as a surface stabiliser for pre-vegetated slopes. The product is manufactured from woven natural jute fibre to form a mesh of approximately 10mm x 10mm in aperture, which is staked at 1m² intervals. The jute eventually degrades into an organic mulch after approximately two years, by which time the planted vegetation should have taken its place and be secured by its own rooting system.

SPECIFICATIONS

Physical Properties:		Units	292
Composition		100% jute fibre	
Mass	(Nominal)	g/m ²	292
Water Retention	(Nominal)	g/m ²	1 300
Yarn Diameter	(Nominal)	mm	2 - 4
Open Area	(Nominal)	%	65 - 70
Aperture Size	(Nominal)	mm	10 x 10
Roll Width	(Nominal)	m	1.22
Roll Length	(Nominal)	m	100



The information contained in this publication is provided in good faith and to the best of our knowledge is true and accurate.
Fibertex South Africa reserves the right to make technical modifications to their products without notice.

KZN: (T) +27 (0)31 736 7100
(E) salesza@fibertex.com

GAUTENG: (T) +27 (0)11 965 0205
(E) tenders@geotextilesafrica.co.za

W CAPE: (T) +27 (0)21 701 3569
(E) adminct@geotextilesafrica.co.za



www.fibertex.com / www.geotextilesafrica.co.za

** GEOTEXTILES • GEOGRIDS • SUBSOIL DRAINAGE PIPE & FITTINGS • GEOCELLS • COMPOSITE DRAINAGE SYTEMS • GABIONS & MATTRESSES
• CUSPATED SHEETS • GEOBAGS • GCLs • GEOMEMBRANE