

SlopeSaver RC-350

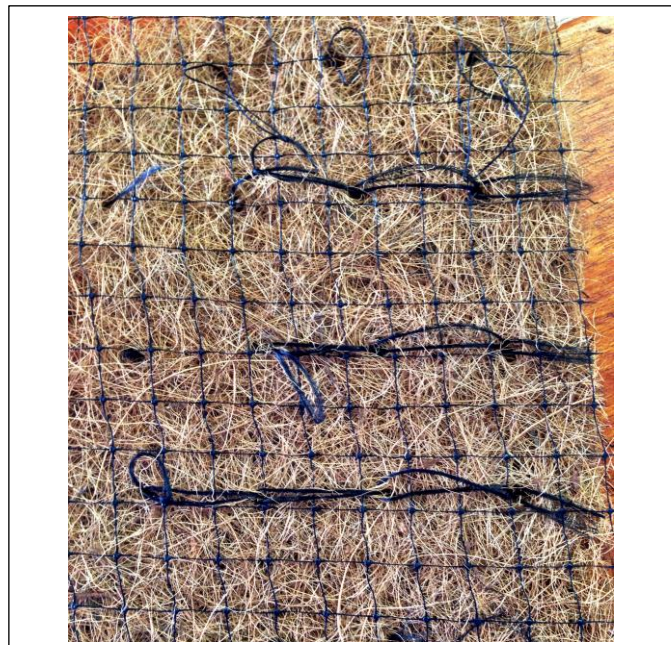
GEOSYNTHETIC SOLUTIONS **



Slope Saver is commonly used as a biodegradable erosion control blanket for slopes. The product is manufactured from natural coir fibre and reinforced with Polypropylene (PP) threads. The product is used in erosion control, re-vegetation, capping, sound barriers and green roofing applications.

SPECIFICATIONS

Physical Properties:		Units	RC-350
Composition		350 gsm Coir Fibre, Straw with PP thread netting (17mm x 17mm) on both sides	
Mass	(Nominal)	g/m ²	363
Thickness	(Nominal)	mm	6 – 7
Tensile Strength (ASTM D4595)	MD	kN/m	3.87
	CD	kN/m	2.3
Grab Braking Load (ASTM D4631 – 91)	MD	N	287
	CD	N	221
Apparent Opening Size (ASTM D4751)	(Nominal)	Micron	0
Roll Dimensions	(Nominal)	m	2.4m (W), 50m (L)



The information contained in this publication is provided in good faith and to the best of our knowledge is true and accurate. Fibertex South Africa reserves the right to make technical modifications to their products without notice.



KZN: (T) +27 (0)31 736 7100
(E) salesza@fibertex.com

GAUTENG: (T) +27 (0)11 965 0205
(E) tenders@geotextilesafrica.co.za

W CAPE: (T) +27 (0)21 701 3569
(E) adminct@geotextilesafrica.co.za

www.fibertex.com / www.geotextilesafrica.co.za

** GEOTEXTILES • GEOGRIDS • SUBSOIL DRAINAGE PIPE & FITTINGS • GEOCELLS • COMPOSITE DRAINAGE SYTEMS • GABIONS & MATTRESSES
• CUSPATED SHEETS • GEOBAGS • GCLs • GEOMEMBRANE