



BET SHEMESH ENGINES LTD



Center of Excellence

Jet Engines Parts Manufacturer

MRO & U Center

R&D (Small Jet Engines)

Company History & Major Events

- **1968 - Founded**
- **1968 - 1981 The company owned by Turbomeca, France**
- **1981 -1992 Government owned company**
- **1992 - Private Company, And From 1997 Traded on the Israel Stock Exchange**
- **Turbomeca era (Marbore) - late sixties, seventies**
- **General Electric J79 - seventies**
- **Pratt & Whitney PW1120-F100 - eighties**
- **Turboshaft Engines Allison 250, T-700, F100-229 - nineties**
- **Pratt & Whitney Canada PT6A- year 2000**

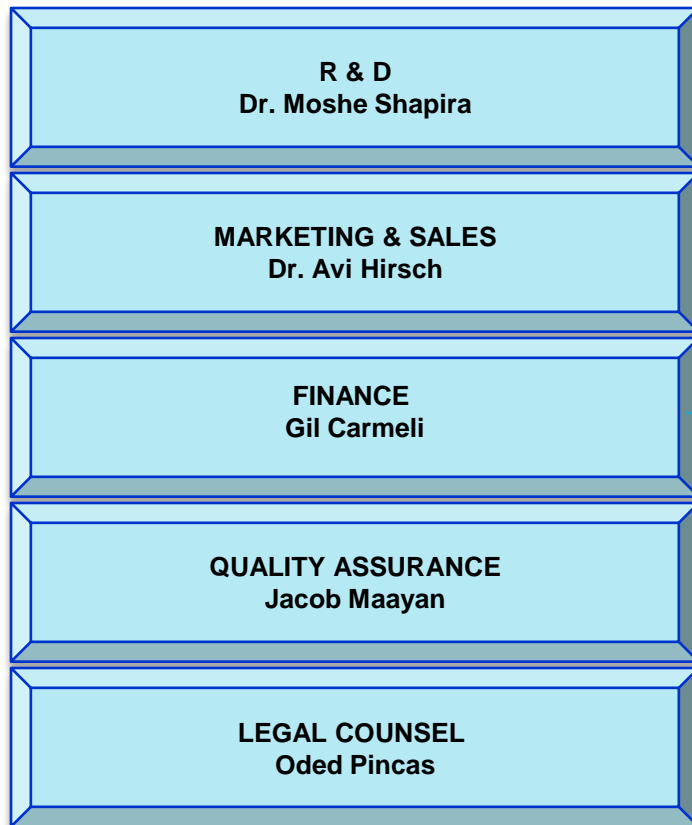
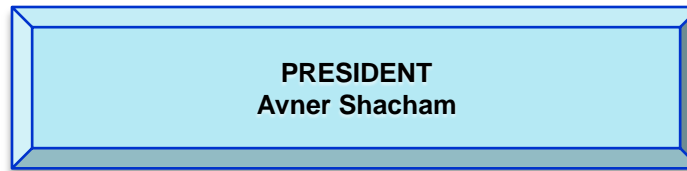


Shareholders

- **CLAL Israel Ltd.** **36%**
(the largest concern in Israel)
- **Avner Shacham (CEO)** **27%**
- **Public** **37%**



Organization



General information

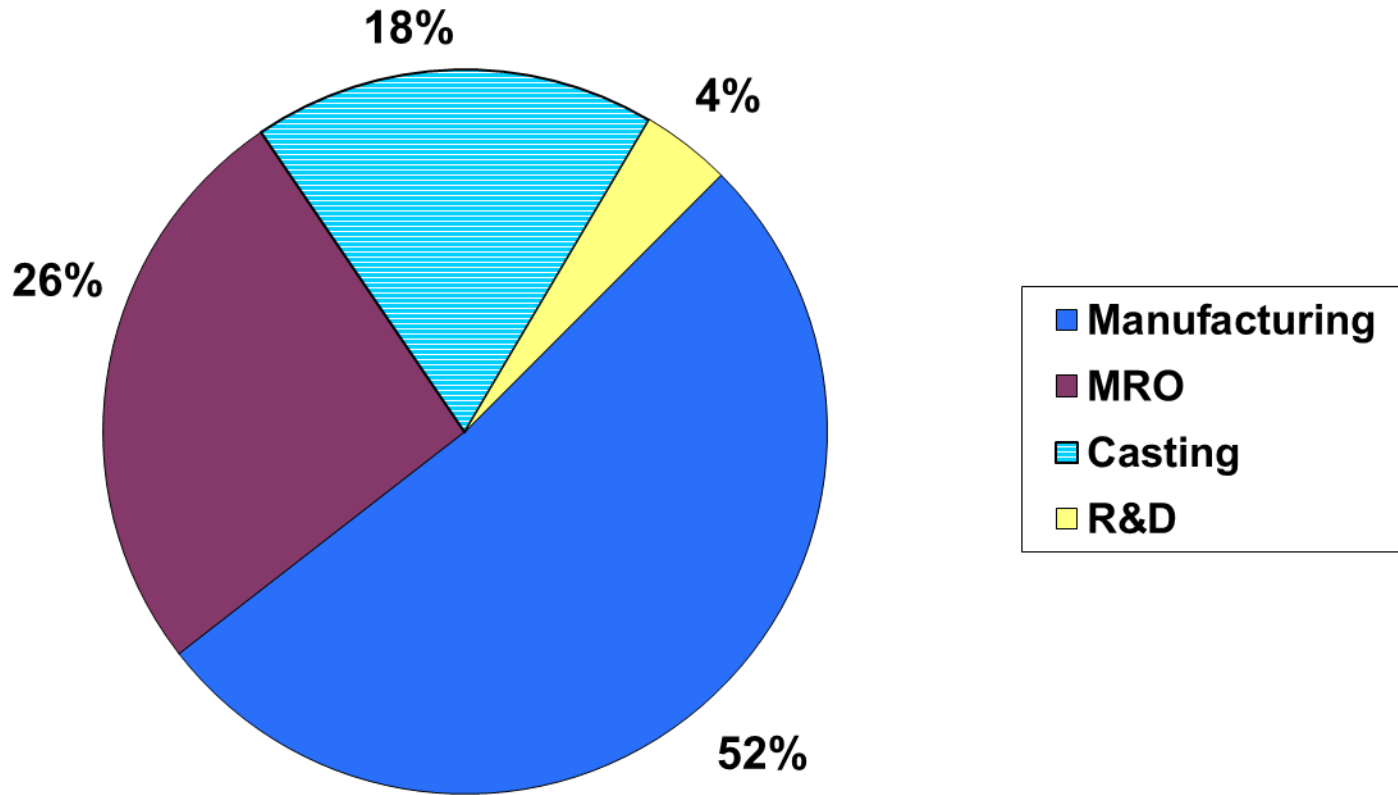
Floor Area: 40,000 sq. m.

Employees: 607

	BSEL	LPO (subsidiary)
Shop workers	412	39
Engineers	62	4
QA & Inspection	21	7
General & Administration	55	7
TOTAL	552	50



PRODUCTS



List of selected Customers

Engine OEM's	Governmental Operators	Civil Operators / MRO
Pratt & Whitney, USA	Israel Air Force	CN Airways, Israel
GE Aviation, USA	Thai Air Force	Ayit Aviation, Israel
Hamilton Sundstrand, USA	Thai Navy	Orange Aviation, Israel
Snecma, France	Colombian Air Force	Tel-Aviv Helicopters, Israel
Siemens, UK	Colombian Army	Ofek Aerial Photography, Israel
Eldim, The Netherlands	Hellenic Navy	Snunit Aviation (Elbit), Israel
ITP, Spain		Rotorflug GmbH, Germany
Samsung, South Korea		Greek Air, Greece
MTU Aero Engines, Germany		Heliswiss Iberica, Spain
		Air Touraine Helicoptere, France
Mitsubishi Heavy Industries (MHI), Japan		Agro Flight Services, Finland
		HSL Helicopter Services, UK
Hindustan Aeronautics Ltd (HAL), India		Armsa Aviacion, Guatemala
		SkyTech Ltd, Kazakhstan



It is BSEL's goal to reach world-class excellence in:

- **Quality**
- **On-time delivery**
- **Customer satisfaction**
- **Competitive pricing**



Bet Shemesh Engines Ltd - M.R.O.&U

Maintenance

Repair

Overhaul

& Upgrade



MRO&U Division

**Assembly, repair, overhaul & upgrade services
for the following engines / modules:**

- **Pratt & Whitney:** F100,-PW100/200,-100/200DPI,-220E,-229
- **GE Aircraft Engines:** T700-700,-701,-701C,-701D
- **Rolls Royce / Allison:** 250 family, focusing on –C20B/H, C30, -47
- **Pratt & Whitney Canada:** PT6A family, focusing on -27/28, -34, -41/42, -67
- **Bet Shemesh Engines:** BS-151, Sorek, Various expendable engines



Machining

- **Vertical & Horizontal Universal & CNC Turning Lathe (up to Dia 48").**
- **Vertical & Horizontal Machine Center (49" X31.5").**
- **Vertical & Horizontal Broaching (Up to Dia 48" X 480").**
- **Jig Bore Drilling.**
- **5 Axis Machining Centers**



Machining

- **Grinding:**
 - **Universal Grinding Machine.**
 - **CNC Grinding Machine.**
 - **Internal Grinding Machine.**
 - **JIG Bore Grinder.**
 - **Surface Grinder.**
 - **Broach Cutter Grinder.**
- **E.D.M**
- **Laser Drilling - 5 Axis & Rotary Table Dia 40”.**





Dedicated Grinder C. C. for Grinding Turbine (High Speed) & Compressor Rotor (Low Speed) Blades





T-700 Compressor Case Flowpath Plasma recoating





Computerized Fleming AF-36





ECI Room



Heat Treatment

- **Stress relief & annealing**
- **Precipitation hardening**
- **Solution**
- **Aging**



Surface Treatment

Wet & dry grit blast

Dry plastic blast

Glass bead

CNC & Universal Shot peening

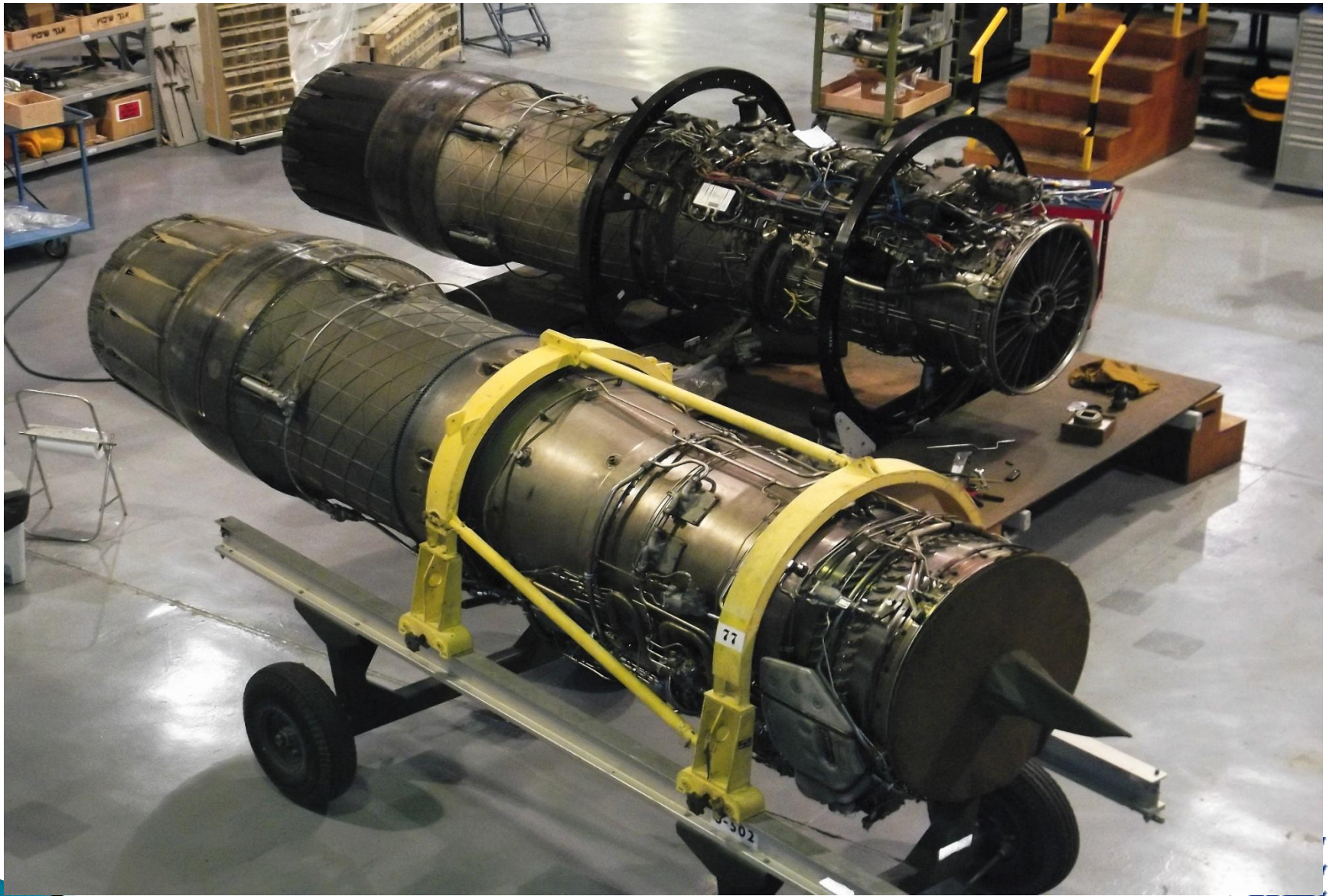


MRO&U FACILITY PHOTOS









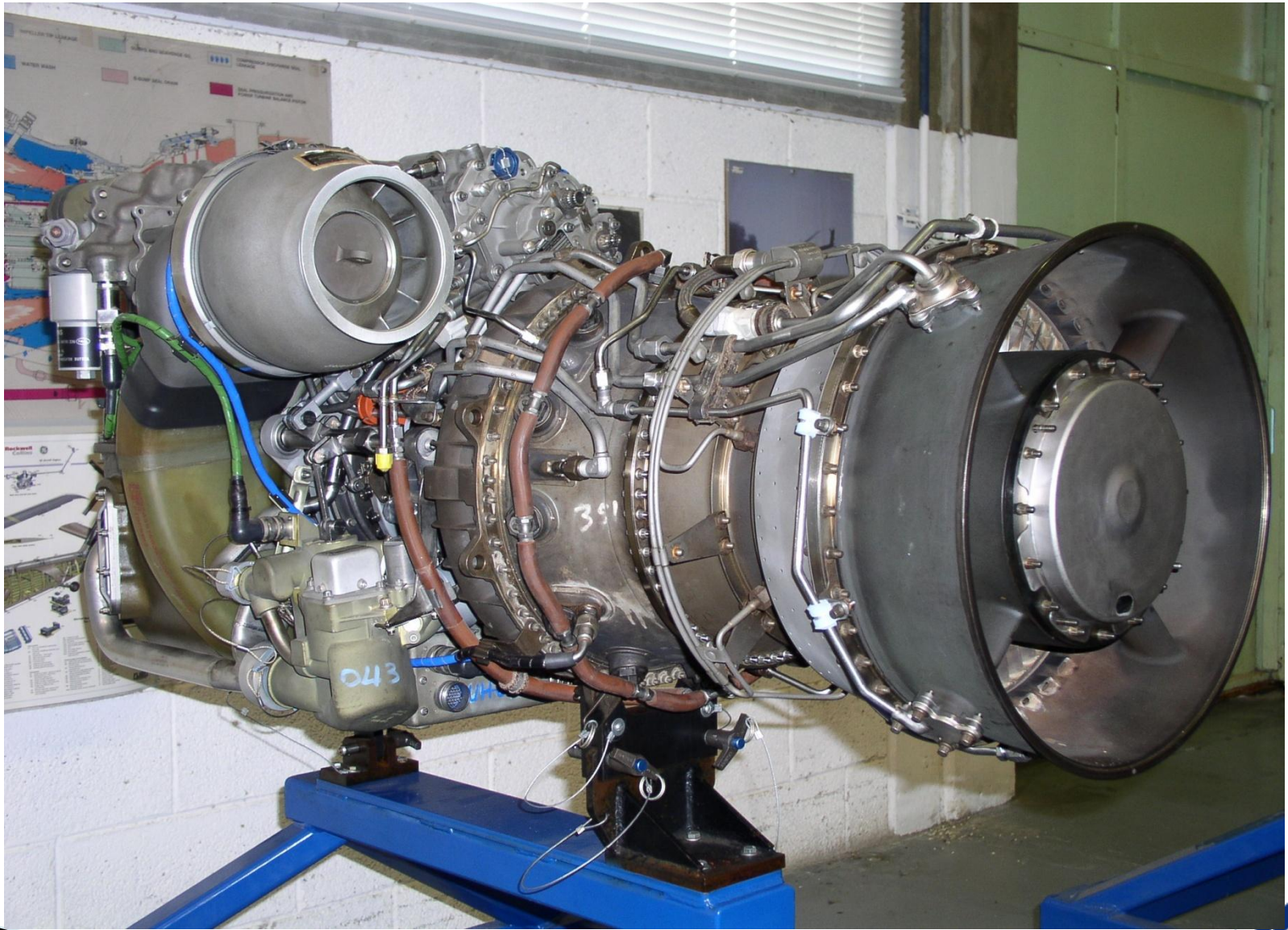




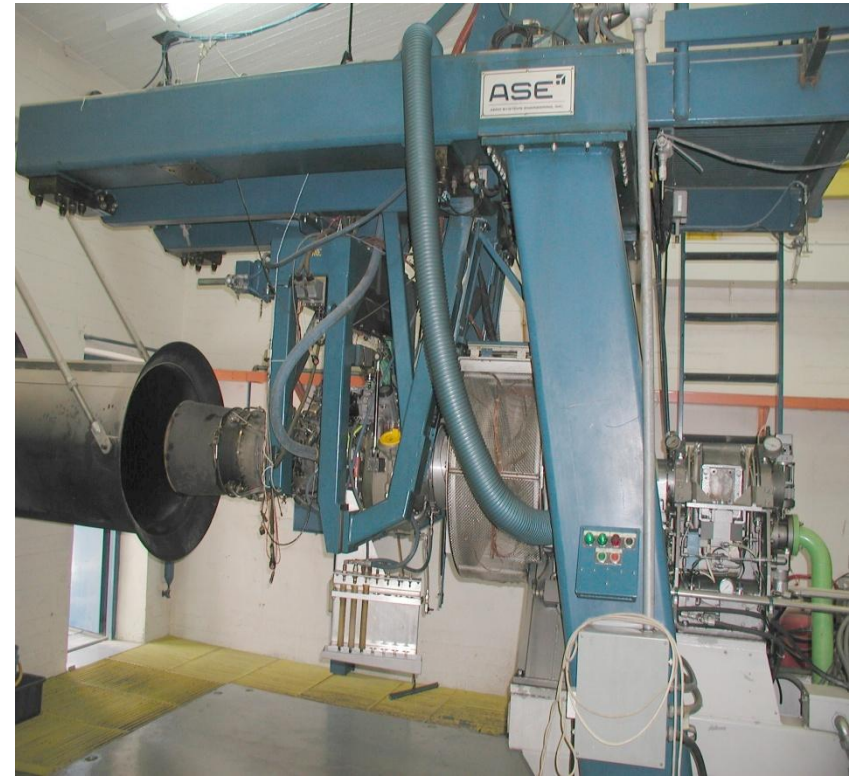






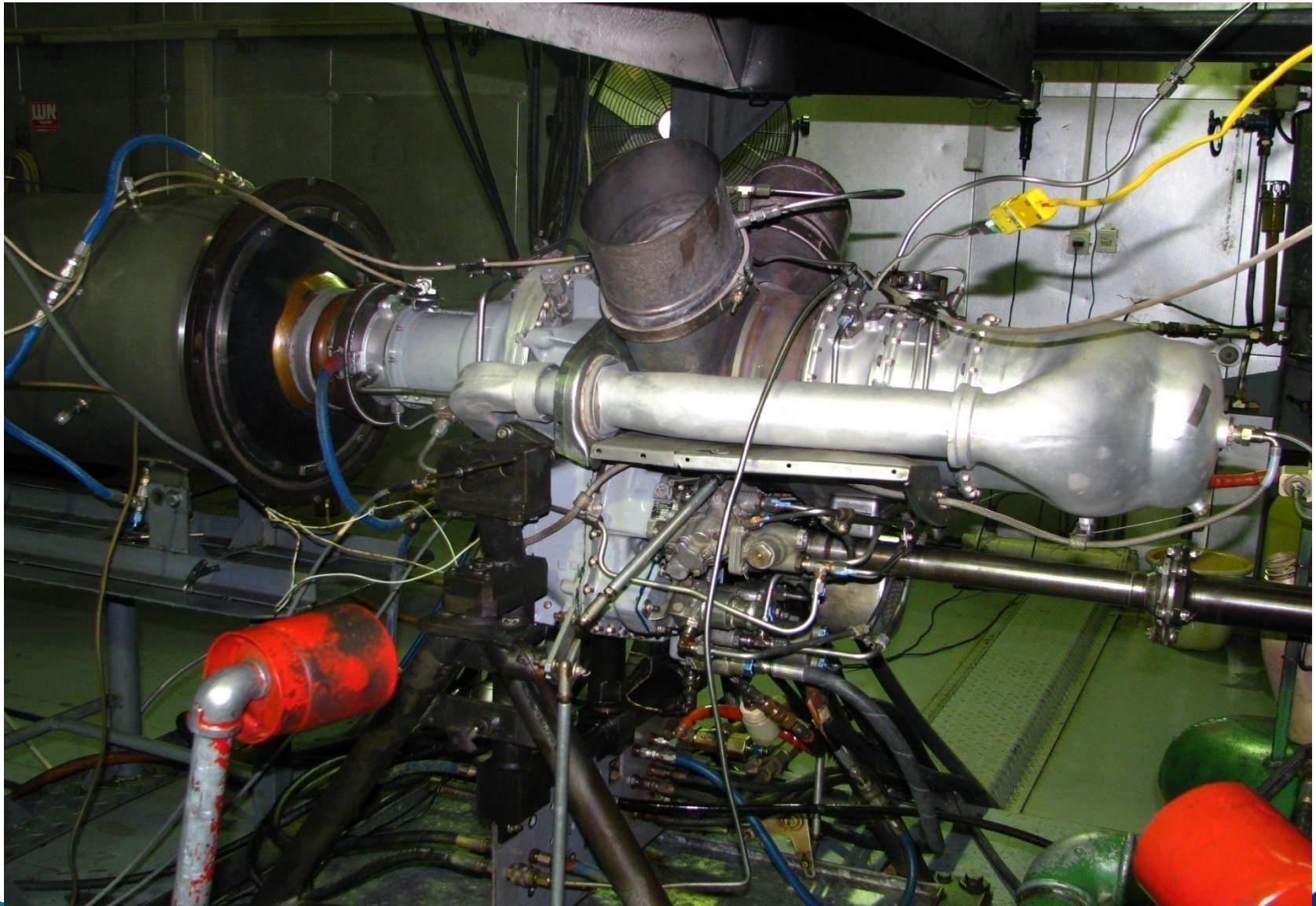






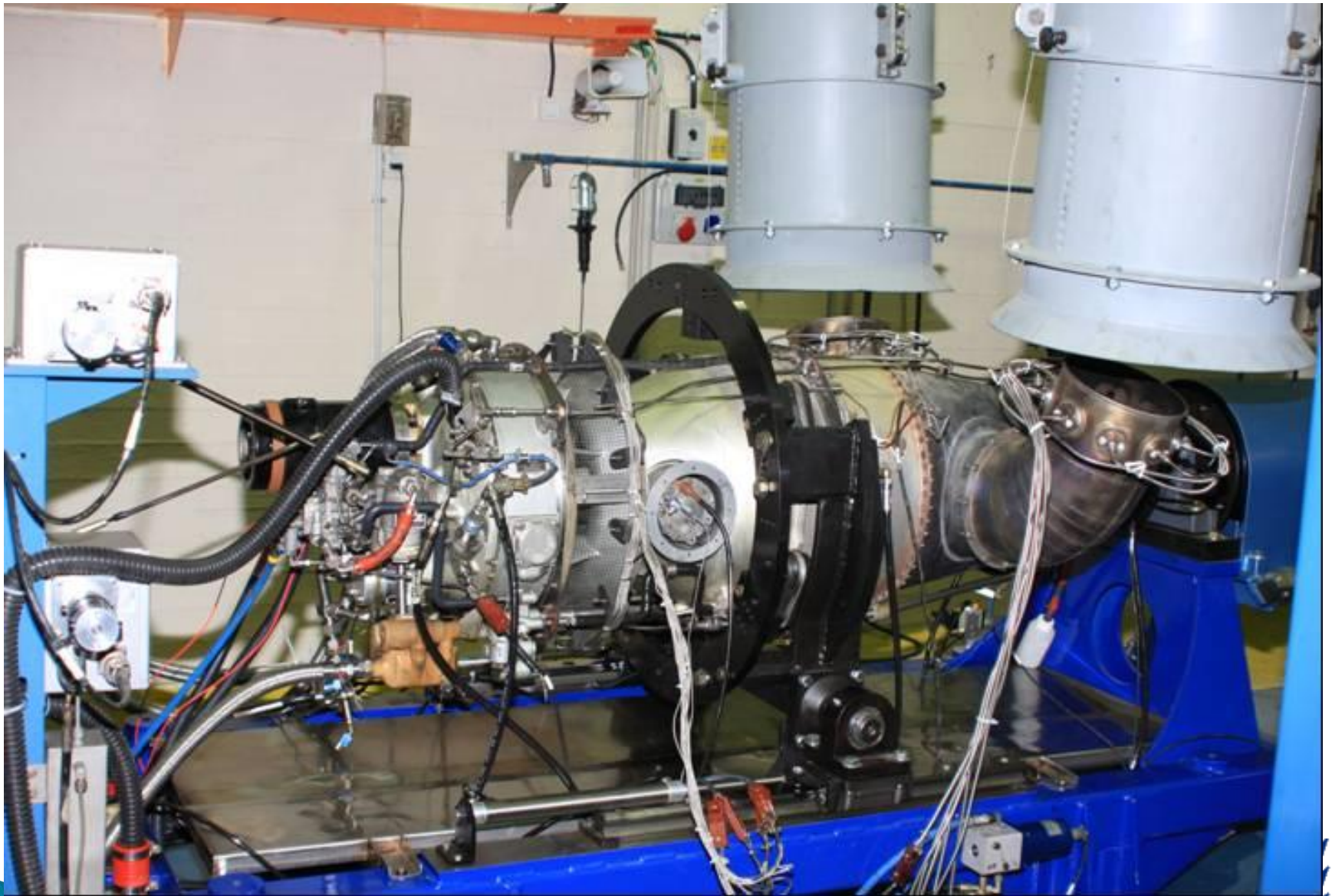


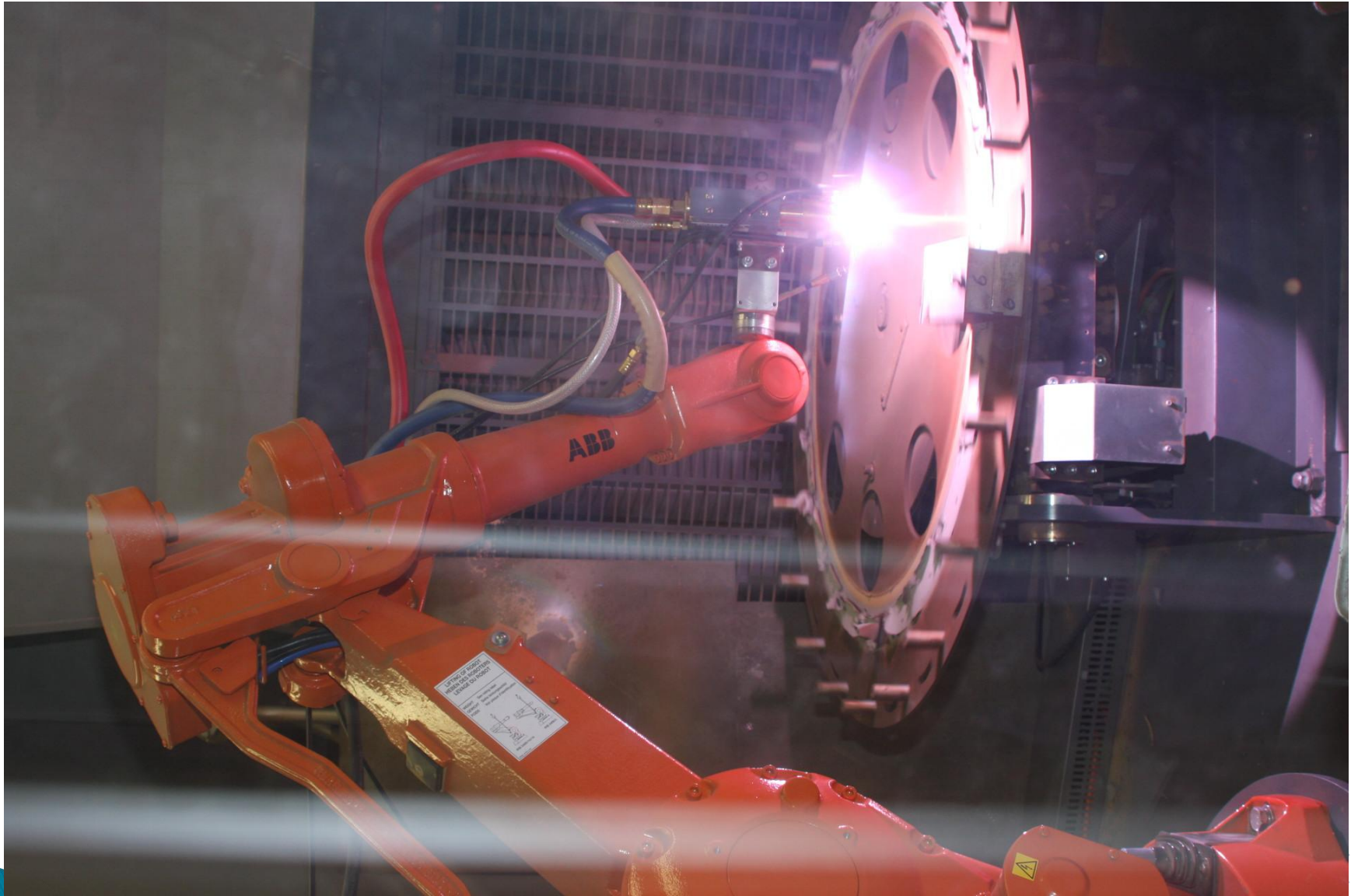














THANK YOU !



For any questions please contact:

Mr. Shay Weiss – Marketing Manager (MRO&U)

+972-50-407-4015

shay@bsei.co.il