

**Return of Organization Exempt From Income Tax**  
Under section 501(c), 527, or 4947(a)(1) of the Internal Revenue Code (except private foundations)

▶ Do not enter social security numbers on this form as it may be made public.  
▶ Go to [www.irs.gov/Form990](http://www.irs.gov/Form990) for instructions and the latest information.

**A For the 2017 calendar year, or tax year beginning and ending**

<b>B</b> Check if applicable:  <input type="checkbox"/> Address change <input type="checkbox"/> Name change <input type="checkbox"/> Initial return <input type="checkbox"/> Final return/terminated <input type="checkbox"/> Amended return <input type="checkbox"/> Application pending	<b>C</b> Name of organization <b>ARTISTS FOR HUMANITY, INC.</b> Doing business as Number and street (or P.O. box if mail is not delivered to street address) Room/suite <b>100 WEST SECOND STREET - 2ND FLOOR</b> City or town, state or province, country, and ZIP or foreign postal code <b>BOSTON, MA 02127</b> <b>F</b> Name and address of principal officer: <b>SUSAN RODGERSON</b> <b>100 WEST SECOND STREET 2ND FLOOR, BOSTON, MA</b>	<b>D</b> Employer identification number <b>** - *** 8434</b> <b>E</b> Telephone number <b>617-268-7620</b> <b>G</b> Gross receipts \$ <b>4,250,099.</b> <b>H(a)</b> Is this a group return for subordinates? <input type="checkbox"/> Yes <input checked="" type="checkbox"/> No <b>H(b)</b> Are all subordinates included? <input type="checkbox"/> Yes <input type="checkbox"/> No If "No," attach a list. (see instructions) <b>H(c)</b> Group exemption number ▶
<b>I</b> Tax-exempt status: <input checked="" type="checkbox"/> 501(c)(3) <input type="checkbox"/> 501(c) ( ) (insert no.) <input type="checkbox"/> 4947(a)(1) or <input type="checkbox"/> 527		
<b>J</b> Website: ▶ <b>WWW.AFH BOSTON.ORG</b>		
<b>K</b> Form of organization: <input checked="" type="checkbox"/> Corporation <input type="checkbox"/> Trust <input type="checkbox"/> Association <input type="checkbox"/> Other ▶		
<b>L</b> Year of formation: <b>1992</b>		<b>M</b> State of legal domicile: <b>MA</b>

**Part I Summary**

<b>Activities &amp; Governance</b>	<b>1</b> Briefly describe the organization's mission or most significant activities: <b>TO PROVIDE UNDER-RESOURCED YOUTH WITH PAID EMPLOYMENT, SKILLS ADVANCEMENT, AND MENTORSHIP IN THE ARTS</b> <b>2</b> Check this box <input checked="" type="checkbox"/> if the organization discontinued its operations or disposed of more than 25% of its net assets. <b>3</b> Number of voting members of the governing body (Part VI, line 1a) ..... <b>3</b> <b>9</b> <b>4</b> Number of independent voting members of the governing body (Part VI, line 1b) ..... <b>4</b> <b>9</b> <b>5</b> Total number of individuals employed in calendar year 2017 (Part V, line 2a) ..... <b>5</b> <b>283</b> <b>6</b> Total number of volunteers (estimate if necessary) ..... <b>6</b> <b>15</b> <b>7a</b> Total unrelated business revenue from Part VIII, column (C), line 12 ..... <b>7a</b> <b>0.</b> <b>7b</b> Net unrelated business taxable income from Form 990-T, line 34 ..... <b>7b</b> <b>0.</b>																									
<b>Revenue</b>	<table border="1" style="width:100%; border-collapse: collapse;"> <thead> <tr> <th></th> <th style="text-align: right;">Prior Year</th> <th style="text-align: right;">Current Year</th> </tr> </thead> <tbody> <tr> <td><b>8</b> Contributions and grants (Part VIII, line 1h) .....</td> <td style="text-align: right;">6,887,833.</td> <td style="text-align: right;">3,275,007.</td> </tr> <tr> <td><b>9</b> Program service revenue (Part VIII, line 2g) .....</td> <td style="text-align: right;">1,383,992.</td> <td style="text-align: right;">929,153.</td> </tr> <tr> <td><b>10</b> Investment income (Part VIII, column (A), lines 3, 4, and 7d) .....</td> <td style="text-align: right;">0.</td> <td style="text-align: right;">15,130.</td> </tr> <tr> <td><b>11</b> Other revenue (Part VIII, column (A), lines 5, 6d, 8c, 9c, 10c, and 11e) .....</td> <td style="text-align: right;">-66.</td> <td style="text-align: right;">13,219.</td> </tr> <tr> <td><b>12</b> Total revenue - add lines 8 through 11 (must equal Part VIII, column (A), line 12) .....</td> <td style="text-align: right;">8,271,759.</td> <td style="text-align: right;">4,232,509.</td> </tr> </tbody> </table>		Prior Year	Current Year	<b>8</b> Contributions and grants (Part VIII, line 1h) .....	6,887,833.	3,275,007.	<b>9</b> Program service revenue (Part VIII, line 2g) .....	1,383,992.	929,153.	<b>10</b> Investment income (Part VIII, column (A), lines 3, 4, and 7d) .....	0.	15,130.	<b>11</b> Other revenue (Part VIII, column (A), lines 5, 6d, 8c, 9c, 10c, and 11e) .....	-66.	13,219.	<b>12</b> Total revenue - add lines 8 through 11 (must equal Part VIII, column (A), line 12) .....	8,271,759.	4,232,509.							
	Prior Year	Current Year																								
<b>8</b> Contributions and grants (Part VIII, line 1h) .....	6,887,833.	3,275,007.																								
<b>9</b> Program service revenue (Part VIII, line 2g) .....	1,383,992.	929,153.																								
<b>10</b> Investment income (Part VIII, column (A), lines 3, 4, and 7d) .....	0.	15,130.																								
<b>11</b> Other revenue (Part VIII, column (A), lines 5, 6d, 8c, 9c, 10c, and 11e) .....	-66.	13,219.																								
<b>12</b> Total revenue - add lines 8 through 11 (must equal Part VIII, column (A), line 12) .....	8,271,759.	4,232,509.																								
<b>Expenses</b>	<table border="1" style="width:100%; border-collapse: collapse;"> <tbody> <tr> <td><b>13</b> Grants and similar amounts paid (Part IX, column (A), lines 1-3) .....</td> <td style="text-align: right;">0.</td> <td style="text-align: right;">0.</td> </tr> <tr> <td><b>14</b> Benefits paid to or for members (Part IX, column (A), line 4) .....</td> <td style="text-align: right;">0.</td> <td style="text-align: right;">0.</td> </tr> <tr> <td><b>15</b> Salaries, other compensation, employee benefits (Part IX, column (A), lines 5-10) .....</td> <td style="text-align: right;">3,161,608.</td> <td style="text-align: right;">3,153,999.</td> </tr> <tr> <td><b>16a</b> Professional fundraising fees (Part IX, column (A), line 11e) .....</td> <td style="text-align: right;">0.</td> <td style="text-align: right;">0.</td> </tr> <tr> <td><b>b</b> Total fundraising expenses (Part IX, column (D), line 25) ▶ <b>439,721.</b></td> <td></td> <td></td> </tr> <tr> <td><b>17</b> Other expenses (Part IX, column (A), lines 11a-11d, 11f-24e) .....</td> <td style="text-align: right;">1,051,781.</td> <td style="text-align: right;">980,968.</td> </tr> <tr> <td><b>18</b> Total expenses. Add lines 13-17 (must equal Part IX, column (A), line 25) .....</td> <td style="text-align: right;">4,213,389.</td> <td style="text-align: right;">4,134,967.</td> </tr> <tr> <td><b>19</b> Revenue less expenses. Subtract line 18 from line 12 .....</td> <td style="text-align: right;">4,058,370.</td> <td style="text-align: right;">97,542.</td> </tr> </tbody> </table>	<b>13</b> Grants and similar amounts paid (Part IX, column (A), lines 1-3) .....	0.	0.	<b>14</b> Benefits paid to or for members (Part IX, column (A), line 4) .....	0.	0.	<b>15</b> Salaries, other compensation, employee benefits (Part IX, column (A), lines 5-10) .....	3,161,608.	3,153,999.	<b>16a</b> Professional fundraising fees (Part IX, column (A), line 11e) .....	0.	0.	<b>b</b> Total fundraising expenses (Part IX, column (D), line 25) ▶ <b>439,721.</b>			<b>17</b> Other expenses (Part IX, column (A), lines 11a-11d, 11f-24e) .....	1,051,781.	980,968.	<b>18</b> Total expenses. Add lines 13-17 (must equal Part IX, column (A), line 25) .....	4,213,389.	4,134,967.	<b>19</b> Revenue less expenses. Subtract line 18 from line 12 .....	4,058,370.	97,542.	
<b>13</b> Grants and similar amounts paid (Part IX, column (A), lines 1-3) .....	0.	0.																								
<b>14</b> Benefits paid to or for members (Part IX, column (A), line 4) .....	0.	0.																								
<b>15</b> Salaries, other compensation, employee benefits (Part IX, column (A), lines 5-10) .....	3,161,608.	3,153,999.																								
<b>16a</b> Professional fundraising fees (Part IX, column (A), line 11e) .....	0.	0.																								
<b>b</b> Total fundraising expenses (Part IX, column (D), line 25) ▶ <b>439,721.</b>																										
<b>17</b> Other expenses (Part IX, column (A), lines 11a-11d, 11f-24e) .....	1,051,781.	980,968.																								
<b>18</b> Total expenses. Add lines 13-17 (must equal Part IX, column (A), line 25) .....	4,213,389.	4,134,967.																								
<b>19</b> Revenue less expenses. Subtract line 18 from line 12 .....	4,058,370.	97,542.																								
<b>Net Assets or Fund Balances</b>	<table border="1" style="width:100%; border-collapse: collapse;"> <thead> <tr> <th></th> <th style="text-align: right;">Beginning of Current Year</th> <th style="text-align: right;">End of Year</th> </tr> </thead> <tbody> <tr> <td><b>20</b> Total assets (Part X, line 16) .....</td> <td style="text-align: right;">19,280,439.</td> <td style="text-align: right;">18,171,703.</td> </tr> <tr> <td><b>21</b> Total liabilities (Part X, line 26) .....</td> <td style="text-align: right;">609,198.</td> <td style="text-align: right;">6,547,990.</td> </tr> <tr> <td><b>22</b> Net assets or fund balances. Subtract line 21 from line 20 .....</td> <td style="text-align: right;">18,671,241.</td> <td style="text-align: right;">11,623,713.</td> </tr> </tbody> </table>		Beginning of Current Year	End of Year	<b>20</b> Total assets (Part X, line 16) .....	19,280,439.	18,171,703.	<b>21</b> Total liabilities (Part X, line 26) .....	609,198.	6,547,990.	<b>22</b> Net assets or fund balances. Subtract line 21 from line 20 .....	18,671,241.	11,623,713.													
	Beginning of Current Year	End of Year																								
<b>20</b> Total assets (Part X, line 16) .....	19,280,439.	18,171,703.																								
<b>21</b> Total liabilities (Part X, line 26) .....	609,198.	6,547,990.																								
<b>22</b> Net assets or fund balances. Subtract line 21 from line 20 .....	18,671,241.	11,623,713.																								

**Part II Signature Block**

Under penalties of perjury, I declare that I have examined this return, including accompanying schedules and statements, and to the best of my knowledge and belief, it is true, correct, and complete. Declaration of preparer (other than officer) is based on all information of which preparer has any knowledge.

<b>Sign Here</b>	Signature of officer <b>SUSAN RODGERSON, EXECUTIVE/ARTISTIC DIR./PRESIDENT</b> Type or print name and title	Date _____			
<b>Paid Preparer Use Only</b>	Print/Type preparer's name <b>YEVGENIYA GORLOVSKY-SCHEPYEVGENIYA GORLOVSKY-</b>	Preparer's signature <b>YEVGENIYA GORLOVSKY-</b>	Date <b>11/14/18</b>	Check if self-employed <input type="checkbox"/>	PTIN <b>P01485484</b>
	Firm's name ▶ <b>ALEXANDER, ARONSON, FINNING &amp; CO., P.C.</b>	Firm's EIN ▶ <b>** - *** 1780</b>	Firm's address ▶ <b>50 WASHINGTON STREET WESTBOROUGH, MA 01581</b>		
	Phone no. <b>508-366-9100</b>				

May the IRS discuss this return with the preparer shown above? (see instructions)  Yes  No

Part III Statement of Program Service Accomplishments

Check if Schedule O contains a response or note to any line in this Part III [X]

1 Briefly describe the organization's mission: TO BRIDGE ECONOMIC, RACIAL, AND SOCIAL DIVISIONS BY PROVIDING UNDERSERVED YOUTH WITH KEYS TO SELF-SUFFICIENCY THROUGH PAID EMPLOYMENT IN THE ARTS.

2 Did the organization undertake any significant program services during the year which were not listed on the prior Form 990 or 990-EZ? [ ] Yes [X] No

3 Did the organization cease conducting, or make significant changes in how it conducts, any program services? [ ] Yes [X] No

4 Describe the organization's program service accomplishments for each of its three largest program services, as measured by expenses.

4a (Code: ) (Expenses \$ 3,273,691. including grants of \$ ) (Revenue \$ 934,899.) ARTISTS FOR HUMANITY'S CENTRAL PROGRAM, THE YOUTH ARTS ENTERPRISE THAT HELPS DEVELOP 21ST CENTURY SKILLS FOR SCHOOL AND CAREERS, IS A YEAR-ROUND APPRENTICESHIP AND LEADERSHIP PROGRAM THAT PROVIDES 250 UNDER-RESOURCED BOSTON TEENS ANNUALLY WITH PAID EMPLOYMENT DURING THEIR CRITICAL OUT-OF-SCHOOL TIME. ARTISTS FOR HUMANITY PARTNERS TEENS IN SMALL GROUPS WITH PROFESSIONAL ARTISTS/MENTORS TO DESIGN, CREATE, SHOWCASE, MARKET AND SELL THEIR FINE ART AND DESIGN SERVICES, AND EXHIBIT THEIR WORKS IN THE ARTISTS FOR HUMANITY LEWIS GALLERY AND A VARIETY OF OTHER PUBLIC ARENAS. THE ARTISTS FOR HUMANITY EXPERIENCE OFFERS YOUTH PROFESSIONAL, EDUCATIONAL, AND ECONOMIC EMPOWERMENT. IT OPENS DOORS TO ACADEMIC AND CAREER OPPORTUNITIES. WITHIN THIS IMPACTFUL PROGRAM, YOUNG PEOPLE PARTICIPATE IN OPERATING A COMMERCIALY VIABLE

4b (Code: ) (Expenses \$ including grants of \$ ) (Revenue \$ )

4c (Code: ) (Expenses \$ including grants of \$ ) (Revenue \$ )

4d Other program services (Describe in Schedule O.) (Expenses \$ including grants of \$ ) (Revenue \$ )

4e Total program service expenses 3,273,691.

**Part IV Checklist of Required Schedules**

	Yes	No
<b>1</b> Is the organization described in section 501(c)(3) or 4947(a)(1) (other than a private foundation)? <i>If "Yes," complete Schedule A</i> .....	X	
<b>2</b> Is the organization required to complete <i>Schedule B, Schedule of Contributors</i> ? .....	X	
<b>3</b> Did the organization engage in direct or indirect political campaign activities on behalf of or in opposition to candidates for public office? <i>If "Yes," complete Schedule C, Part I</i> .....		X
<b>4 Section 501(c)(3) organizations.</b> Did the organization engage in lobbying activities, or have a section 501(h) election in effect during the tax year? <i>If "Yes," complete Schedule C, Part II</i> .....		X
<b>5</b> Is the organization a section 501(c)(4), 501(c)(5), or 501(c)(6) organization that receives membership dues, assessments, or similar amounts as defined in Revenue Procedure 98-19? <i>If "Yes," complete Schedule C, Part III</i> .....		X
<b>6</b> Did the organization maintain any donor advised funds or any similar funds or accounts for which donors have the right to provide advice on the distribution or investment of amounts in such funds or accounts? <i>If "Yes," complete Schedule D, Part I</i> .....		X
<b>7</b> Did the organization receive or hold a conservation easement, including easements to preserve open space, the environment, historic land areas, or historic structures? <i>If "Yes," complete Schedule D, Part II</i> .....		X
<b>8</b> Did the organization maintain collections of works of art, historical treasures, or other similar assets? <i>If "Yes," complete Schedule D, Part III</i> .....		X
<b>9</b> Did the organization report an amount in Part X, line 21, for escrow or custodial account liability, serve as a custodian for amounts not listed in Part X; or provide credit counseling, debt management, credit repair, or debt negotiation services? <i>If "Yes," complete Schedule D, Part IV</i> .....		X
<b>10</b> Did the organization, directly or through a related organization, hold assets in temporarily restricted endowments, permanent endowments, or quasi-endowments? <i>If "Yes," complete Schedule D, Part V</i> .....		X
<b>11</b> If the organization's answer to any of the following questions is "Yes," then complete Schedule D, Parts VI, VII, VIII, IX, or X as applicable.		
<b>a</b> Did the organization report an amount for land, buildings, and equipment in Part X, line 10? <i>If "Yes," complete Schedule D, Part VI</i> .....	X	
<b>b</b> Did the organization report an amount for investments - other securities in Part X, line 12 that is 5% or more of its total assets reported in Part X, line 16? <i>If "Yes," complete Schedule D, Part VII</i> .....		X
<b>c</b> Did the organization report an amount for investments - program related in Part X, line 13 that is 5% or more of its total assets reported in Part X, line 16? <i>If "Yes," complete Schedule D, Part VIII</i> .....		X
<b>d</b> Did the organization report an amount for other assets in Part X, line 15 that is 5% or more of its total assets reported in Part X, line 16? <i>If "Yes," complete Schedule D, Part IX</i> .....		X
<b>e</b> Did the organization report an amount for other liabilities in Part X, line 25? <i>If "Yes," complete Schedule D, Part X</i> .....	X	
<b>f</b> Did the organization's separate or consolidated financial statements for the tax year include a footnote that addresses the organization's liability for uncertain tax positions under FIN 48 (ASC 740)? <i>If "Yes," complete Schedule D, Part X</i> .....	X	
<b>12a</b> Did the organization obtain separate, independent audited financial statements for the tax year? <i>If "Yes," complete Schedule D, Parts XI and XII</i> .....		X
<b>b</b> Was the organization included in consolidated, independent audited financial statements for the tax year? <i>If "Yes," and if the organization answered "No" to line 12a, then completing Schedule D, Parts XI and XII is optional</i> .....	X	
<b>13</b> Is the organization a school described in section 170(b)(1)(A)(ii)? <i>If "Yes," complete Schedule E</i> .....		X
<b>14a</b> Did the organization maintain an office, employees, or agents outside of the United States? .....		X
<b>b</b> Did the organization have aggregate revenues or expenses of more than \$10,000 from grantmaking, fundraising, business, investment, and program service activities outside the United States, or aggregate foreign investments valued at \$100,000 or more? <i>If "Yes," complete Schedule F, Parts I and IV</i> .....		X
<b>15</b> Did the organization report on Part IX, column (A), line 3, more than \$5,000 of grants or other assistance to or for any foreign organization? <i>If "Yes," complete Schedule F, Parts II and IV</i> .....		X
<b>16</b> Did the organization report on Part IX, column (A), line 3, more than \$5,000 of aggregate grants or other assistance to or for foreign individuals? <i>If "Yes," complete Schedule F, Parts III and IV</i> .....		X
<b>17</b> Did the organization report a total of more than \$15,000 of expenses for professional fundraising services on Part IX, column (A), lines 6 and 11e? <i>If "Yes," complete Schedule G, Part I</i> .....		X
<b>18</b> Did the organization report more than \$15,000 total of fundraising event gross income and contributions on Part VIII, lines 1c and 8a? <i>If "Yes," complete Schedule G, Part II</i> .....	X	
<b>19</b> Did the organization report more than \$15,000 of gross income from gaming activities on Part VIII, line 9a? <i>If "Yes," complete Schedule G, Part III</i> .....		X

**Part IV Checklist of Required Schedules** (continued)

	Yes	No
<b>20a</b> Did the organization operate one or more hospital facilities? <i>If "Yes," complete Schedule H</i> .....		X
<b>b</b> If "Yes" to line 20a, did the organization attach a copy of its audited financial statements to this return? .....		
<b>21</b> Did the organization report more than \$5,000 of grants or other assistance to any domestic organization or domestic government on Part IX, column (A), line 1? <i>If "Yes," complete Schedule I, Parts I and II</i> .....		X
<b>22</b> Did the organization report more than \$5,000 of grants or other assistance to or for domestic individuals on Part IX, column (A), line 2? <i>If "Yes," complete Schedule I, Parts I and III</i> .....		X
<b>23</b> Did the organization answer "Yes" to Part VII, Section A, line 3, 4, or 5 about compensation of the organization's current and former officers, directors, trustees, key employees, and highest compensated employees? <i>If "Yes," complete Schedule J</i> .....	X	
<b>24a</b> Did the organization have a tax-exempt bond issue with an outstanding principal amount of more than \$100,000 as of the last day of the year, that was issued after December 31, 2002? <i>If "Yes," answer lines 24b through 24d and complete Schedule K. If "No," go to line 25a</i> .....		X
<b>b</b> Did the organization invest any proceeds of tax-exempt bonds beyond a temporary period exception? .....		
<b>c</b> Did the organization maintain an escrow account other than a refunding escrow at any time during the year to defease any tax-exempt bonds? .....		
<b>d</b> Did the organization act as an "on behalf of" issuer for bonds outstanding at any time during the year? .....		
<b>25a</b> <b>Section 501(c)(3), 501(c)(4), and 501(c)(29) organizations.</b> Did the organization engage in an excess benefit transaction with a disqualified person during the year? <i>If "Yes," complete Schedule L, Part I</i> .....		X
<b>b</b> Is the organization aware that it engaged in an excess benefit transaction with a disqualified person in a prior year, and that the transaction has not been reported on any of the organization's prior Forms 990 or 990-EZ? <i>If "Yes," complete Schedule L, Part I</i> .....		X
<b>26</b> Did the organization report any amount on Part X, line 5, 6, or 22 for receivables from or payables to any current or former officers, directors, trustees, key employees, highest compensated employees, or disqualified persons? <i>If "Yes," complete Schedule L, Part II</i> .....		X
<b>27</b> Did the organization provide a grant or other assistance to an officer, director, trustee, key employee, substantial contributor or employee thereof, a grant selection committee member, or to a 35% controlled entity or family member of any of these persons? <i>If "Yes," complete Schedule L, Part III</i> .....		X
<b>28</b> Was the organization a party to a business transaction with one of the following parties (see Schedule L, Part IV instructions for applicable filing thresholds, conditions, and exceptions):		
<b>a</b> A current or former officer, director, trustee, or key employee? <i>If "Yes," complete Schedule L, Part IV</i> .....		X
<b>b</b> A family member of a current or former officer, director, trustee, or key employee? <i>If "Yes," complete Schedule L, Part IV</i> .....	X	
<b>c</b> An entity of which a current or former officer, director, trustee, or key employee (or a family member thereof) was an officer, director, trustee, or direct or indirect owner? <i>If "Yes," complete Schedule L, Part IV</i> .....		X
<b>29</b> Did the organization receive more than \$25,000 in non-cash contributions? <i>If "Yes," complete Schedule M</i> .....	X	
<b>30</b> Did the organization receive contributions of art, historical treasures, or other similar assets, or qualified conservation contributions? <i>If "Yes," complete Schedule M</i> .....		X
<b>31</b> Did the organization liquidate, terminate, or dissolve and cease operations? <i>If "Yes," complete Schedule N, Part I</i> .....		X
<b>32</b> Did the organization sell, exchange, dispose of, or transfer more than 25% of its net assets? <i>If "Yes," complete Schedule N, Part II</i> .....	X	
<b>33</b> Did the organization own 100% of an entity disregarded as separate from the organization under Regulations sections 301.7701-2 and 301.7701-3? <i>If "Yes," complete Schedule R, Part I</i> .....		X
<b>34</b> Was the organization related to any tax-exempt or taxable entity? <i>If "Yes," complete Schedule R, Part II, III, or IV, and Part V, line 1</i> .....	X	
<b>35a</b> Did the organization have a controlled entity within the meaning of section 512(b)(13)? .....		X
<b>b</b> If "Yes" to line 35a, did the organization receive any payment from or engage in any transaction with a controlled entity within the meaning of section 512(b)(13)? <i>If "Yes," complete Schedule R, Part V, line 2</i> .....		
<b>36</b> <b>Section 501(c)(3) organizations.</b> Did the organization make any transfers to an exempt non-charitable related organization? <i>If "Yes," complete Schedule R, Part V, line 2</i> .....		X
<b>37</b> Did the organization conduct more than 5% of its activities through an entity that is not a related organization and that is treated as a partnership for federal income tax purposes? <i>If "Yes," complete Schedule R, Part VI</i> .....		X
<b>38</b> Did the organization complete Schedule O and provide explanations in Schedule O for Part VI, lines 11b and 19? .....	X	

**Note.** All Form 990 filers are required to complete Schedule O .....

Part V Statements Regarding Other IRS Filings and Tax Compliance

Check if Schedule O contains a response or note to any line in this Part V

Input box for Schedule O

Main table with columns for question numbers (1a-14b), Yes, and No. Includes rows for backup withholding, employee reporting, foreign accounts, and charitable contributions.

**Part VI Governance, Management, and Disclosure** For each "Yes" response to lines 2 through 7b below, and for a "No" response to line 8a, 8b, or 10b below, describe the circumstances, processes, or changes in Schedule O. See instructions.

Check if Schedule O contains a response or note to any line in this Part VI

**Section A. Governing Body and Management**

		Yes	No
<b>1a</b>	Enter the number of voting members of the governing body at the end of the tax year If there are material differences in voting rights among members of the governing body, or if the governing body delegated broad authority to an executive committee or similar committee, explain in Schedule O.		
<b>1b</b>	Enter the number of voting members included in line 1a, above, who are independent		
<b>2</b>	Did any officer, director, trustee, or key employee have a family relationship or a business relationship with any other officer, director, trustee, or key employee?		X
<b>3</b>	Did the organization delegate control over management duties customarily performed by or under the direct supervision of officers, directors, or trustees, or key employees to a management company or other person?		X
<b>4</b>	Did the organization make any significant changes to its governing documents since the prior Form 990 was filed?		X
<b>5</b>	Did the organization become aware during the year of a significant diversion of the organization's assets?		X
<b>6</b>	Did the organization have members or stockholders?		X
<b>7a</b>	Did the organization have members, stockholders, or other persons who had the power to elect or appoint one or more members of the governing body?		X
<b>7b</b>	Are any governance decisions of the organization reserved to (or subject to approval by) members, stockholders, or persons other than the governing body?		X
<b>8</b>	Did the organization contemporaneously document the meetings held or written actions undertaken during the year by the following:		
<b>8a</b>	The governing body?	X	
<b>8b</b>	Each committee with authority to act on behalf of the governing body?	X	
<b>9</b>	Is there any officer, director, trustee, or key employee listed in Part VII, Section A, who cannot be reached at the organization's mailing address? If "Yes," provide the names and addresses in Schedule O		X

**Section B. Policies** (This Section B requests information about policies not required by the Internal Revenue Code.)

		Yes	No
<b>10a</b>	Did the organization have local chapters, branches, or affiliates?		X
<b>10b</b>	If "Yes," did the organization have written policies and procedures governing the activities of such chapters, affiliates, and branches to ensure their operations are consistent with the organization's exempt purposes?		
<b>11a</b>	Has the organization provided a complete copy of this Form 990 to all members of its governing body before filing the form?	X	
<b>11b</b>	Describe in Schedule O the process, if any, used by the organization to review this Form 990.		
<b>12a</b>	Did the organization have a written conflict of interest policy? If "No," go to line 13	X	
<b>12b</b>	Were officers, directors, or trustees, and key employees required to disclose annually interests that could give rise to conflicts?	X	
<b>12c</b>	Did the organization regularly and consistently monitor and enforce compliance with the policy? If "Yes," describe in Schedule O how this was done	X	
<b>13</b>	Did the organization have a written whistleblower policy?	X	
<b>14</b>	Did the organization have a written document retention and destruction policy?	X	
<b>15</b>	Did the process for determining compensation of the following persons include a review and approval by independent persons, comparability data, and contemporaneous substantiation of the deliberation and decision?		
<b>15a</b>	The organization's CEO, Executive Director, or top management official	X	
<b>15b</b>	Other officers or key employees of the organization	X	
	If "Yes" to line 15a or 15b, describe the process in Schedule O (see instructions).		
<b>16a</b>	Did the organization invest in, contribute assets to, or participate in a joint venture or similar arrangement with a taxable entity during the year?		X
<b>16b</b>	If "Yes," did the organization follow a written policy or procedure requiring the organization to evaluate its participation in joint venture arrangements under applicable federal tax law, and take steps to safeguard the organization's exempt status with respect to such arrangements?		

**Section C. Disclosure**

- 17** List the states with which a copy of this Form 990 is required to be filed **MA**
- 18** Section 6104 requires an organization to make its Forms 1023 (or 1024 if applicable), 990, and 990-T (Section 501(c)(3)s only) available for public inspection. Indicate how you made these available. Check all that apply.  
 Own website     Another's website     Upon request     Other (explain in Schedule O)
- 19** Describe in Schedule O whether (and if so, how) the organization made its governing documents, conflict of interest policy, and financial statements available to the public during the tax year.
- 20** State the name, address, and telephone number of the person who possesses the organization's books and records: **MOSES AJOU - 617-268-7620**  
**100 WEST SECOND STREET, 2ND FLOOR, BOSTON, MA 02127**

**Part VII Compensation of Officers, Directors, Trustees, Key Employees, Highest Compensated Employees, and Independent Contractors**

Check if Schedule O contains a response or note to any line in this Part VII

**Section A. Officers, Directors, Trustees, Key Employees, and Highest Compensated Employees**

**1a** Complete this table for all persons required to be listed. Report compensation for the calendar year ending with or within the organization's tax year.

- List all of the organization's **current** officers, directors, trustees (whether individuals or organizations), regardless of amount of compensation. Enter -0- in columns (D), (E), and (F) if no compensation was paid.
- List all of the organization's **current** key employees, if any. See instructions for definition of "key employee."
- List the organization's five **current** highest compensated employees (other than an officer, director, trustee, or key employee) who received reportable compensation (Box 5 of Form W-2 and/or Box 7 of Form 1099-MISC) of more than \$100,000 from the organization and any related organizations.
- List all of the organization's **former** officers, key employees, and highest compensated employees who received more than \$100,000 of reportable compensation from the organization and any related organizations.
- List all of the organization's **former directors or trustees** that received, in the capacity as a former director or trustee of the organization, more than \$10,000 of reportable compensation from the organization and any related organizations.

List persons in the following order: individual trustees or directors; institutional trustees; officers; key employees; highest compensated employees; and former such persons.

Check this box if neither the organization nor any related organization compensated any current officer, director, or trustee.

(A) Name and Title	(B) Average hours per week (list any hours for related organizations below line)	(C) Position (do not check more than one box, unless person is both an officer and a director/trustee)						(D) Reportable compensation from the organization (W-2/1099-MISC)	(E) Reportable compensation from related organizations (W-2/1099-MISC)	(F) Estimated amount of other compensation from the organization and related organizations
		Individual trustee or director	Institutional trustee	Officer	Key employee	Highest compensated employee	Former			
(1) PATRICK PLANETA BOARD CHAIR	1.00	X		X				0.	0.	0.
(2) DAVID NAGAHIRO MEMBER	1.00	X						0.	0.	0.
(3) CAROLINE TAGGART MEMBER	1.00	X						0.	0.	0.
(4) SENAM KUMAHIA MEMBER	1.00	X						0.	0.	0.
(5) NINA NICOLOSI MEMBER	1.00	X						0.	0.	0.
(6) NICOLE RICE MEMBER	1.00	X						0.	0.	0.
(7) YARO PAN MEMBER	1.00	X						0.	0.	0.
(8) NATALIE LEMLE MEMBER	1.00	X						0.	0.	0.
(9) ABIGAIL OGILVY MEMBER	1.00	X						0.	0.	0.
(10) ANDREW MOTTA OPERATIONS DIR./ TREASURER	40.00			X				91,730.	0.	9,030.
(11) SUSAN RODGERSON EXEC/ARTISTIC DIR./PRESIDE	40.00			X				160,000.	0.	4,245.
(12) PATRICE MAYE DIRECTOR OF INSTITUTIONAL GIVING/CLE	36.00			X				30,793.	0.	2,358.
(13) PAOLA OZUNA DEVELOPMENT OFFICER/CLERK	40.00			X				31,731.	0.	3,351.
(14) LORRAINE A JOHNSON DIRECTOR OF PROGRAM OPERATIONSS	40.00					X		103,846.	0.	4,245.





**Part VIII Statement of Revenue**

Check if Schedule O contains a response or note to any line in this Part VIII

				(A)	(B)	(C)	(D)	
				Total revenue	Related or exempt function revenue	Unrelated business revenue	Revenue excluded from tax under sections 512 - 514	
<b>Contributions, Gifts, Grants and Other Similar Amounts</b>	<b>1 a</b> Federated campaigns	<b>1a</b>						
	<b>b</b> Membership dues	<b>1b</b>						
	<b>c</b> Fundraising events	<b>1c</b>	65,071.					
	<b>d</b> Related organizations	<b>1d</b>						
	<b>e</b> Government grants (contributions)	<b>1e</b>	490,584.					
	<b>f</b> All other contributions, gifts, grants, and similar amounts not included above	<b>1f</b>	2,719,352.					
	<b>g</b> Noncash contributions included in lines 1a-1f: \$		31,726.					
	<b>h Total.</b> Add lines 1a-1f			3,275,007.				
<b>Program Service Revenue</b>	<b>2 a</b> <b>PRODUCT SALES</b>	<b>Business Code</b>	452000	817,080.	817,080.			
	<b>b</b> <b>GALLERY RENTALS</b>		532000	112,073.	112,073.			
	<b>c</b>							
	<b>d</b>							
	<b>e</b>							
	<b>f</b> All other program service revenue							
	<b>g Total.</b> Add lines 2a-2f			929,153.				
<b>Other Revenue</b>	<b>3</b> Investment income (including dividends, interest, and other similar amounts)			15,130.			15,130.	
	<b>4</b> Income from investment of tax-exempt bond proceeds							
	<b>5</b> Royalties							
	<b>6 a</b> Gross rents	(i) Real	(ii) Personal					
		<b>b</b> Less: rental expenses						
		<b>c</b> Rental income or (loss)						
		<b>d</b> Net rental income or (loss)						
	<b>7 a</b> Gross amount from sales of assets other than inventory	(i) Securities	(ii) Other					
		<b>b</b> Less: cost or other basis and sales expenses						
		<b>c</b> Gain or (loss)						
		<b>d</b> Net gain or (loss)						
	<b>8 a</b> Gross income from fundraising events (not including \$ 65,071. of contributions reported on line 1c). See Part IV, line 18	<b>a</b>		25,063.				
		<b>b</b> Less: direct expenses	<b>b</b>	17,590.				
		<b>c</b> Net income or (loss) from fundraising events			7,473.			7,473.
	<b>9 a</b> Gross income from gaming activities. See Part IV, line 19	<b>a</b>						
<b>b</b> Less: direct expenses		<b>b</b>						
<b>c</b> Net income or (loss) from gaming activities								
<b>10 a</b> Gross sales of inventory, less returns and allowances	<b>a</b>							
	<b>b</b> Less: cost of goods sold	<b>b</b>						
	<b>c</b> Net income or (loss) from sales of inventory							
Miscellaneous Revenue			<b>Business Code</b>					
<b>11 a</b> <b>OTHER INCOME</b>			900099	5,746.	5,746.			
	<b>b</b>							
	<b>c</b>							
	<b>d</b> All other revenue							
<b>e Total.</b> Add lines 11a-11d				5,746.				
<b>12 Total revenue.</b> See instructions.				4,232,509.	934,899.	0.	22,603.	

**Part IX Statement of Functional Expenses**

Section 501(c)(3) and 501(c)(4) organizations must complete all columns. All other organizations must complete column (A).

Check if Schedule O contains a response or note to any line in this Part IX

Do not include amounts reported on lines 6b, 7b, 8b, 9b, and 10b of Part VIII.	(A) Total expenses	(B) Program service expenses	(C) Management and general expenses	(D) Fundraising expenses
1 Grants and other assistance to domestic organizations and domestic governments. See Part IV, line 21				
2 Grants and other assistance to domestic individuals. See Part IV, line 22				
3 Grants and other assistance to foreign organizations, foreign governments, and foreign individuals. See Part IV, lines 15 and 16				
4 Benefits paid to or for members				
5 Compensation of current officers, directors, trustees, and key employees	332,181.	119,252.	36,762.	176,167.
6 Compensation not included above, to disqualified persons (as defined under section 4958(f)(1)) and persons described in section 4958(c)(3)(B)				
7 Other salaries and wages	2,403,741.	2,087,532.	179,326.	136,883.
8 Pension plan accruals and contributions (include section 401(k) and 403(b) employer contributions)				
9 Other employee benefits	173,163.	138,137.	16,460.	18,566.
10 Payroll taxes	244,914.	183,686.	24,491.	36,737.
11 Fees for services (non-employees):				
a Management				
b Legal				
c Accounting	26,779.		26,779.	
d Lobbying				
e Professional fundraising services. See Part IV, line 17				
f Investment management fees				
g Other. (If line 11g amount exceeds 10% of line 25, column (A) amount, list line 11g expenses on Sch O.)	191,089.	168,171.	22,918.	
12 Advertising and promotion				
13 Office expenses	55,395.	30,273.	13,805.	11,317.
14 Information technology				
15 Royalties				
16 Occupancy	43,772.	32,829.	4,377.	6,566.
17 Travel	26,893.	20,170.	2,689.	4,034.
18 Payments of travel or entertainment expenses for any federal, state, or local public officials				
19 Conferences, conventions, and meetings				
20 Interest	7,763.	5,928.	734.	1,101.
21 Payments to affiliates				
22 Depreciation, depletion, and amortization	159,832.	119,874.	15,983.	23,975.
23 Insurance	29,875.	22,406.	2,988.	4,481.
24 Other expenses. Itemize expenses not covered above. (List miscellaneous expenses in line 24e. If line 24e amount exceeds 10% of line 25, column (A) amount, list line 24e expenses on Schedule O.)				
a <b>PROGRAM SUPPLIES</b>	239,087.	239,087.		
b <b>WRITE-OFF OF CAPITAL CO</b>	62,198.		62,198.	
c <b>CLEANING EXPENSE</b>	54,753.	41,065.	5,475.	8,213.
d <b>MISCELLANEOUS</b>	38,935.	32,746.	2,475.	3,714.
e All other expenses	44,597.	32,535.	4,095.	7,967.
25 <b>Total functional expenses.</b> Add lines 1 through 24e	4,134,967.	3,273,691.	421,555.	439,721.
26 <b>Joint costs.</b> Complete this line only if the organization reported in column (B) joint costs from a combined educational campaign and fundraising solicitation.				

Check here  if following SOP 98-2 (ASC 958-720)

**Part X Balance Sheet**

Check if Schedule O contains a response or note to any line in this Part X

		(A) Beginning of year		(B) End of year
<b>Assets</b>	<b>1</b> Cash - non-interest-bearing .....	477,272.	<b>1</b>	307,912.
	<b>2</b> Savings and temporary cash investments .....	7,383,780.	<b>2</b>	0.
	<b>3</b> Pledges and grants receivable, net .....	2,283,389.	<b>3</b>	531,217.
	<b>4</b> Accounts receivable, net .....	155,463.	<b>4</b>	200,596.
	<b>5</b> Loans and other receivables from current and former officers, directors, trustees, key employees, and highest compensated employees. Complete Part II of Schedule L .....		<b>5</b>	
	<b>6</b> Loans and other receivables from other disqualified persons (as defined under section 4958(f)(1)), persons described in section 4958(c)(3)(B), and contributing employers and sponsoring organizations of section 501(c)(9) voluntary employees' beneficiary organizations (see instr). Complete Part II of Sch L .....		<b>6</b>	
	<b>7</b> Notes and loans receivable, net .....		<b>7</b>	10,785,140.
	<b>8</b> Inventories for sale or use .....	10,604.	<b>8</b>	0.
	<b>9</b> Prepaid expenses and deferred charges .....	7,731.	<b>9</b>	5,152.
	<b>10a</b> Land, buildings, and equipment: cost or other basis. Complete Part VI of Schedule D .....	<b>10a</b> 8,469,059.		
	<b>b</b> Less: accumulated depreciation .....	<b>10b</b> 2,195,873.	6,433,018.	<b>10c</b> 6,273,186.
	<b>11</b> Investments - publicly traded securities .....		<b>11</b>	
	<b>12</b> Investments - other securities. See Part IV, line 11 .....		<b>12</b>	
	<b>13</b> Investments - program-related. See Part IV, line 11 .....		<b>13</b>	
	<b>14</b> Intangible assets .....		<b>14</b>	
	<b>15</b> Other assets. See Part IV, line 11 .....	2,529,182.	<b>15</b>	68,500.
<b>16 Total assets.</b> Add lines 1 through 15 (must equal line 34) .....	19,280,439.	<b>16</b>	18,171,703.	
<b>Liabilities</b>	<b>17</b> Accounts payable and accrued expenses .....	591,570.	<b>17</b>	194,142.
	<b>18</b> Grants payable .....		<b>18</b>	
	<b>19</b> Deferred revenue .....	17,628.	<b>19</b>	69,678.
	<b>20</b> Tax-exempt bond liabilities .....		<b>20</b>	
	<b>21</b> Escrow or custodial account liability. Complete Part IV of Schedule D .....		<b>21</b>	
	<b>22</b> Loans and other payables to current and former officers, directors, trustees, key employees, highest compensated employees, and disqualified persons. Complete Part II of Schedule L .....		<b>22</b>	
	<b>23</b> Secured mortgages and notes payable to unrelated third parties .....		<b>23</b>	
	<b>24</b> Unsecured notes and loans payable to unrelated third parties .....		<b>24</b>	
	<b>25</b> Other liabilities (including federal income tax, payables to related third parties, and other liabilities not included on lines 17-24). Complete Part X of Schedule D .....	0.	<b>25</b>	6,284,170.
	<b>26 Total liabilities.</b> Add lines 17 through 25 .....	609,198.	<b>26</b>	6,547,990.
<b>Net Assets or Fund Balances</b>	<b>Organizations that follow SFAS 117 (ASC 958), check here <input checked="" type="checkbox"/> and complete lines 27 through 29, and lines 33 and 34.</b>			
	<b>27</b> Unrestricted net assets .....	9,283,783.	<b>27</b>	11,004,596.
	<b>28</b> Temporarily restricted net assets .....	9,387,458.	<b>28</b>	619,117.
	<b>29</b> Permanently restricted net assets .....		<b>29</b>	
	<b>Organizations that do not follow SFAS 117 (ASC 958), check here <input type="checkbox"/> and complete lines 30 through 34.</b>			
	<b>30</b> Capital stock or trust principal, or current funds .....		<b>30</b>	
	<b>31</b> Paid-in or capital surplus, or land, building, or equipment fund .....		<b>31</b>	
	<b>32</b> Retained earnings, endowment, accumulated income, or other funds .....		<b>32</b>	
<b>33</b> Total net assets or fund balances .....	18,671,241.	<b>33</b>	11,623,713.	
<b>34</b> Total liabilities and net assets/fund balances .....	19,280,439.	<b>34</b>	18,171,703.	

**Part XI Reconciliation of Net Assets**

Check if Schedule O contains a response or note to any line in this Part XI

1	Total revenue (must equal Part VIII, column (A), line 12)	1	4,232,509.
2	Total expenses (must equal Part IX, column (A), line 25)	2	4,134,967.
3	Revenue less expenses. Subtract line 2 from line 1	3	97,542.
4	Net assets or fund balances at beginning of year (must equal Part X, line 33, column (A))	4	18,671,241.
5	Net unrealized gains (losses) on investments	5	
6	Donated services and use of facilities	6	
7	Investment expenses	7	
8	Prior period adjustments	8	
9	Other changes in net assets or fund balances (explain in Schedule O)	9	-7,145,070.
10	Net assets or fund balances at end of year. Combine lines 3 through 9 (must equal Part X, line 33, column (B))	10	11,623,713.

**Part XII Financial Statements and Reporting**

Check if Schedule O contains a response or note to any line in this Part XII

	Yes	No
1 Accounting method used to prepare the Form 990: <input type="checkbox"/> Cash <input checked="" type="checkbox"/> Accrual <input type="checkbox"/> Other		
If the organization changed its method of accounting from a prior year or checked "Other," explain in Schedule O.		
2a Were the organization's financial statements compiled or reviewed by an independent accountant?		X
If "Yes," check a box below to indicate whether the financial statements for the year were compiled or reviewed on a separate basis, consolidated basis, or both:		
<input type="checkbox"/> Separate basis <input type="checkbox"/> Consolidated basis <input type="checkbox"/> Both consolidated and separate basis		
b Were the organization's financial statements audited by an independent accountant?	X	
If "Yes," check a box below to indicate whether the financial statements for the year were audited on a separate basis, consolidated basis, or both:		
<input type="checkbox"/> Separate basis <input checked="" type="checkbox"/> Consolidated basis <input type="checkbox"/> Both consolidated and separate basis		
c If "Yes" to line 2a or 2b, does the organization have a committee that assumes responsibility for oversight of the audit, review, or compilation of its financial statements and selection of an independent accountant?	X	
If the organization changed either its oversight process or selection process during the tax year, explain in Schedule O.		
3a As a result of a federal award, was the organization required to undergo an audit or audits as set forth in the Single Audit Act and OMB Circular A-133?		X
b If "Yes," did the organization undergo the required audit or audits? If the organization did not undergo the required audit or audits, explain why in Schedule O and describe any steps taken to undergo such audits		



**Part II Support Schedule for Organizations Described in Sections 170(b)(1)(A)(iv) and 170(b)(1)(A)(vi)**

(Complete only if you checked the box on line 5, 7, or 8 of Part I or if the organization failed to qualify under Part III. If the organization fails to qualify under the tests listed below, please complete Part III.)

**Section A. Public Support**

Calendar year (or fiscal year beginning in) ▶	(a) 2013	(b) 2014	(c) 2015	(d) 2016	(e) 2017	(f) Total
<b>1</b> Gifts, grants, contributions, and membership fees received. (Do not include any "unusual grants.") .....	2,471,522.	5,507,182.	5,944,203.	6,867,348.	3,275,007.	24,065,262.
<b>2</b> Tax revenues levied for the organization's benefit and either paid to or expended on its behalf .....						
<b>3</b> The value of services or facilities furnished by a governmental unit to the organization without charge .....						
<b>4 Total.</b> Add lines 1 through 3 .....	2,471,522.	5,507,182.	5,944,203.	6,867,348.	3,275,007.	24,065,262.
<b>5</b> The portion of total contributions by each person (other than a governmental unit or publicly supported organization) included on line 1 that exceeds 2% of the amount shown on line 11, column (f) .....						5,491,875.
<b>6 Public support.</b> Subtract line 5 from line 4.						18,573,387.

**Section B. Total Support**

Calendar year (or fiscal year beginning in) ▶	(a) 2013	(b) 2014	(c) 2015	(d) 2016	(e) 2017	(f) Total
<b>7</b> Amounts from line 4 .....	2,471,522.	5,507,182.	5,944,203.	6,867,348.	3,275,007.	24,065,262.
<b>8</b> Gross income from interest, dividends, payments received on securities loans, rents, royalties, and income from similar sources .....	139.	37.			15,130.	15,306.
<b>9</b> Net income from unrelated business activities, whether or not the business is regularly carried on .....						
<b>10</b> Other income. Do not include gain or loss from the sale of capital assets (Explain in Part VI.) .....	40,220.	1,203.			5,746.	47,169.
<b>11 Total support.</b> Add lines 7 through 10						24,127,737.
<b>12</b> Gross receipts from related activities, etc. (see instructions) .....					12	6,665,960.
<b>13 First five years.</b> If the Form 990 is for the organization's first, second, third, fourth, or fifth tax year as a section 501(c)(3) organization, check this box and <b>stop here</b> .....						<input type="checkbox"/>

**Section C. Computation of Public Support Percentage**

<b>14</b> Public support percentage for 2017 (line 6, column (f) divided by line 11, column (f)) .....	<b>14</b>	76.98 %
<b>15</b> Public support percentage from 2016 Schedule A, Part II, line 14 .....	<b>15</b>	72.43 %
<b>16a 33 1/3% support test - 2017.</b> If the organization did not check the box on line 13, and line 14 is 33 1/3% or more, check this box and <b>stop here.</b> The organization qualifies as a publicly supported organization .....		<input checked="" type="checkbox"/>
<b>b 33 1/3% support test - 2016.</b> If the organization did not check a box on line 13 or 16a, and line 15 is 33 1/3% or more, check this box and <b>stop here.</b> The organization qualifies as a publicly supported organization .....		<input type="checkbox"/>
<b>17a 10% -facts-and-circumstances test - 2017.</b> If the organization did not check a box on line 13, 16a, or 16b, and line 14 is 10% or more, and if the organization meets the "facts-and-circumstances" test, check this box and <b>stop here.</b> Explain in Part VI how the organization meets the "facts-and-circumstances" test. The organization qualifies as a publicly supported organization .....		<input type="checkbox"/>
<b>b 10% -facts-and-circumstances test - 2016.</b> If the organization did not check a box on line 13, 16a, 16b, or 17a, and line 15 is 10% or more, and if the organization meets the "facts-and-circumstances" test, check this box and <b>stop here.</b> Explain in Part VI how the organization meets the "facts-and-circumstances" test. The organization qualifies as a publicly supported organization .....		<input type="checkbox"/>
<b>18 Private foundation.</b> If the organization did not check a box on line 13, 16a, 16b, 17a, or 17b, check this box and see instructions .....		<input type="checkbox"/>

**Part III Support Schedule for Organizations Described in Section 509(a)(2)**

(Complete only if you checked the box on line 10 of Part I or if the organization failed to qualify under Part II. If the organization fails to qualify under the tests listed below, please complete Part II.)

**Section A. Public Support**

Calendar year (or fiscal year beginning in) ►	(a) 2013	(b) 2014	(c) 2015	(d) 2016	(e) 2017	(f) Total
<b>1</b> Gifts, grants, contributions, and membership fees received. (Do not include any "unusual grants.") .....						
<b>2</b> Gross receipts from admissions, merchandise sold or services performed, or facilities furnished in any activity that is related to the organization's tax-exempt purpose .....						
<b>3</b> Gross receipts from activities that are not an unrelated trade or business under section 513 .....						
<b>4</b> Tax revenues levied for the organization's benefit and either paid to or expended on its behalf .....						
<b>5</b> The value of services or facilities furnished by a governmental unit to the organization without charge .....						
<b>6 Total.</b> Add lines 1 through 5 .....						
<b>7a</b> Amounts included on lines 1, 2, and 3 received from disqualified persons .....						
<b>b</b> Amounts included on lines 2 and 3 received from other than disqualified persons that exceed the greater of \$5,000 or 1% of the amount on line 13 for the year .....						
<b>c</b> Add lines 7a and 7b .....						
<b>8 Public support.</b> (Subtract line 7c from line 6.)						

**Section B. Total Support**

Calendar year (or fiscal year beginning in) ►	(a) 2013	(b) 2014	(c) 2015	(d) 2016	(e) 2017	(f) Total
<b>9</b> Amounts from line 6 .....						
<b>10a</b> Gross income from interest, dividends, payments received on securities loans, rents, royalties, and income from similar sources .....						
<b>b</b> Unrelated business taxable income (less section 511 taxes) from businesses acquired after June 30, 1975 .....						
<b>c</b> Add lines 10a and 10b .....						
<b>11</b> Net income from unrelated business activities not included in line 10b, whether or not the business is regularly carried on .....						
<b>12</b> Other income. Do not include gain or loss from the sale of capital assets (Explain in Part VI.) .....						
<b>13 Total support.</b> (Add lines 9, 10c, 11, and 12.)						

**14 First five years.** If the Form 990 is for the organization's first, second, third, fourth, or fifth tax year as a section 501(c)(3) organization, check this box and **stop here**

**Section C. Computation of Public Support Percentage**

<b>15</b> Public support percentage for 2017 (line 8, column (f) divided by line 13, column (f)) .....	<b>15</b>	%
<b>16</b> Public support percentage from 2016 Schedule A, Part III, line 15 .....	<b>16</b>	%

**Section D. Computation of Investment Income Percentage**

<b>17</b> Investment income percentage for 2017 (line 10c, column (f) divided by line 13, column (f)) .....	<b>17</b>	%
<b>18</b> Investment income percentage from 2016 Schedule A, Part III, line 17 .....	<b>18</b>	%

**19a 33 1/3% support tests - 2017.** If the organization did not check the box on line 14, and line 15 is more than 33 1/3%, and line 17 is not more than 33 1/3%, check this box and **stop here**. The organization qualifies as a publicly supported organization

**b 33 1/3% support tests - 2016.** If the organization did not check a box on line 14 or line 19a, and line 16 is more than 33 1/3%, and line 18 is not more than 33 1/3%, check this box and **stop here**. The organization qualifies as a publicly supported organization

**20 Private foundation.** If the organization did not check a box on line 14, 19a, or 19b, check this box and see instructions

**Part IV Supporting Organizations**

(Complete only if you checked a box in line 12 on Part I. If you checked 12a of Part I, complete Sections A and B. If you checked 12b of Part I, complete Sections A and C. If you checked 12c of Part I, complete Sections A, D, and E. If you checked 12d of Part I, complete Sections A and D, and complete Part V.)

**Section A. All Supporting Organizations**

	Yes	No
<b>1</b> Are all of the organization's supported organizations listed by name in the organization's governing documents? <i>If "No," describe in Part VI how the supported organizations are designated. If designated by class or purpose, describe the designation. If historic and continuing relationship, explain.</i>		
<b>2</b> Did the organization have any supported organization that does not have an IRS determination of status under section 509(a)(1) or (2)? <i>If "Yes," explain in Part VI how the organization determined that the supported organization was described in section 509(a)(1) or (2).</i>		
<b>3a</b> Did the organization have a supported organization described in section 501(c)(4), (5), or (6)? <i>If "Yes," answer (b) and (c) below.</i>		
<b>b</b> Did the organization confirm that each supported organization qualified under section 501(c)(4), (5), or (6) and satisfied the public support tests under section 509(a)(2)? <i>If "Yes," describe in Part VI when and how the organization made the determination.</i>		
<b>c</b> Did the organization ensure that all support to such organizations was used exclusively for section 170(c)(2)(B) purposes? <i>If "Yes," explain in Part VI what controls the organization put in place to ensure such use.</i>		
<b>4a</b> Was any supported organization not organized in the United States ("foreign supported organization")? <i>If "Yes," and if you checked 12a or 12b in Part I, answer (b) and (c) below.</i>		
<b>b</b> Did the organization have ultimate control and discretion in deciding whether to make grants to the foreign supported organization? <i>If "Yes," describe in Part VI how the organization had such control and discretion despite being controlled or supervised by or in connection with its supported organizations.</i>		
<b>c</b> Did the organization support any foreign supported organization that does not have an IRS determination under sections 501(c)(3) and 509(a)(1) or (2)? <i>If "Yes," explain in Part VI what controls the organization used to ensure that all support to the foreign supported organization was used exclusively for section 170(c)(2)(B) purposes.</i>		
<b>5a</b> Did the organization add, substitute, or remove any supported organizations during the tax year? <i>If "Yes," answer (b) and (c) below (if applicable). Also, provide detail in Part VI, including (i) the names and EIN numbers of the supported organizations added, substituted, or removed; (ii) the reasons for each such action; (iii) the authority under the organization's organizing document authorizing such action; and (iv) how the action was accomplished (such as by amendment to the organizing document).</i>		
<b>b Type I or Type II only.</b> Was any added or substituted supported organization part of a class already designated in the organization's organizing document?		
<b>c Substitutions only.</b> Was the substitution the result of an event beyond the organization's control?		
<b>6</b> Did the organization provide support (whether in the form of grants or the provision of services or facilities) to anyone other than (i) its supported organizations, (ii) individuals that are part of the charitable class benefited by one or more of its supported organizations, or (iii) other supporting organizations that also support or benefit one or more of the filing organization's supported organizations? <i>If "Yes," provide detail in Part VI.</i>		
<b>7</b> Did the organization provide a grant, loan, compensation, or other similar payment to a substantial contributor (defined in section 4958(c)(3)(C)), a family member of a substantial contributor, or a 35% controlled entity with regard to a substantial contributor? <i>If "Yes," complete Part I of Schedule L (Form 990 or 990-EZ).</i>		
<b>8</b> Did the organization make a loan to a disqualified person (as defined in section 4958) not described in line 7? <i>If "Yes," complete Part I of Schedule L (Form 990 or 990-EZ).</i>		
<b>9a</b> Was the organization controlled directly or indirectly at any time during the tax year by one or more disqualified persons as defined in section 4946 (other than foundation managers and organizations described in section 509(a)(1) or (2))? <i>If "Yes," provide detail in Part VI.</i>		
<b>b</b> Did one or more disqualified persons (as defined in line 9a) hold a controlling interest in any entity in which the supporting organization had an interest? <i>If "Yes," provide detail in Part VI.</i>		
<b>c</b> Did a disqualified person (as defined in line 9a) have an ownership interest in, or derive any personal benefit from, assets in which the supporting organization also had an interest? <i>If "Yes," provide detail in Part VI.</i>		
<b>10a</b> Was the organization subject to the excess business holdings rules of section 4943 because of section 4943(f) (regarding certain Type II supporting organizations, and all Type III non-functionally integrated supporting organizations)? <i>If "Yes," answer 10b below.</i>		
<b>b</b> Did the organization have any excess business holdings in the tax year? <i>(Use Schedule C, Form 4720, to determine whether the organization had excess business holdings.)</i>		



**Part IV Supporting Organizations** (continued)

	Yes	No
<b>11</b> Has the organization accepted a gift or contribution from any of the following persons?		
<b>a</b> A person who directly or indirectly controls, either alone or together with persons described in (b) and (c) below, the governing body of a supported organization?		
<b>b</b> A family member of a person described in (a) above?		
<b>c</b> A 35% controlled entity of a person described in (a) or (b) above? If "Yes" to a, b, or c, provide detail in <b>Part VI</b> .		

**Section B. Type I Supporting Organizations**

	Yes	No
<b>1</b> Did the directors, trustees, or membership of one or more supported organizations have the power to regularly appoint or elect at least a majority of the organization's directors or trustees at all times during the tax year? If "No," describe in <b>Part VI</b> how the supported organization(s) effectively operated, supervised, or controlled the organization's activities. If the organization had more than one supported organization, describe how the powers to appoint and/or remove directors or trustees were allocated among the supported organizations and what conditions or restrictions, if any, applied to such powers during the tax year.		
<b>2</b> Did the organization operate for the benefit of any supported organization other than the supported organization(s) that operated, supervised, or controlled the supporting organization? If "Yes," explain in <b>Part VI</b> how providing such benefit carried out the purposes of the supported organization(s) that operated, supervised, or controlled the supporting organization.		

**Section C. Type II Supporting Organizations**

	Yes	No
<b>1</b> Were a majority of the organization's directors or trustees during the tax year also a majority of the directors or trustees of each of the organization's supported organization(s)? If "No," describe in <b>Part VI</b> how control or management of the supporting organization was vested in the same persons that controlled or managed the supported organization(s).		

**Section D. All Type III Supporting Organizations**

	Yes	No
<b>1</b> Did the organization provide to each of its supported organizations, by the last day of the fifth month of the organization's tax year, (i) a written notice describing the type and amount of support provided during the prior tax year, (ii) a copy of the Form 990 that was most recently filed as of the date of notification, and (iii) copies of the organization's governing documents in effect on the date of notification, to the extent not previously provided?		
<b>2</b> Were any of the organization's officers, directors, or trustees either (i) appointed or elected by the supported organization(s) or (ii) serving on the governing body of a supported organization? If "No," explain in <b>Part VI</b> how the organization maintained a close and continuous working relationship with the supported organization(s).		
<b>3</b> By reason of the relationship described in (2), did the organization's supported organizations have a significant voice in the organization's investment policies and in directing the use of the organization's income or assets at all times during the tax year? If "Yes," describe in <b>Part VI</b> the role the organization's supported organizations played in this regard.		

**Section E. Type III Functionally Integrated Supporting Organizations**

<b>1</b> Check the box next to the method that the organization used to satisfy the Integral Part Test during the year (see instructions).			
<b>a</b> <input type="checkbox"/> The organization satisfied the Activities Test. Complete <b>line 2</b> below.			
<b>b</b> <input type="checkbox"/> The organization is the parent of each of its supported organizations. Complete <b>line 3</b> below.			
<b>c</b> <input type="checkbox"/> The organization supported a governmental entity. Describe in <b>Part VI</b> how you supported a government entity (see instructions).			
<b>2</b> Activities Test. Answer (a) and (b) below.		Yes	No
<b>a</b> Did substantially all of the organization's activities during the tax year directly further the exempt purposes of the supported organization(s) to which the organization was responsive? If "Yes," then in <b>Part VI</b> identify those supported organizations and explain how these activities directly furthered their exempt purposes, how the organization was responsive to those supported organizations, and how the organization determined that these activities constituted substantially all of its activities.			
<b>b</b> Did the activities described in (a) constitute activities that, but for the organization's involvement, one or more of the organization's supported organization(s) would have been engaged in? If "Yes," explain in <b>Part VI</b> the reasons for the organization's position that its supported organization(s) would have engaged in these activities but for the organization's involvement.			
<b>3</b> Parent of Supported Organizations. Answer (a) and (b) below.			
<b>a</b> Did the organization have the power to regularly appoint or elect a majority of the officers, directors, or trustees of each of the supported organizations? Provide details in <b>Part VI</b> .			
<b>b</b> Did the organization exercise a substantial degree of direction over the policies, programs, and activities of each of its supported organizations? If "Yes," describe in <b>Part VI</b> the role played by the organization in this regard.			

**Part V Type III Non-Functionally Integrated 509(a)(3) Supporting Organizations**

**1**  Check here if the organization satisfied the Integral Part Test as a qualifying trust on Nov. 20, 1970 (explain in Part VI.) **See instructions.** All other Type III non-functionally integrated supporting organizations must complete Sections A through E.

<b>Section A - Adjusted Net Income</b>		(A) Prior Year	(B) Current Year (optional)
<b>1</b>	Net short-term capital gain	<b>1</b>	
<b>2</b>	Recoveries of prior-year distributions	<b>2</b>	
<b>3</b>	Other gross income (see instructions)	<b>3</b>	
<b>4</b>	Add lines 1 through 3	<b>4</b>	
<b>5</b>	Depreciation and depletion	<b>5</b>	
<b>6</b>	Portion of operating expenses paid or incurred for production or collection of gross income or for management, conservation, or maintenance of property held for production of income (see instructions)	<b>6</b>	
<b>7</b>	Other expenses (see instructions)	<b>7</b>	
<b>8</b>	<b>Adjusted Net Income</b> (subtract lines 5, 6, and 7 from line 4)	<b>8</b>	

<b>Section B - Minimum Asset Amount</b>		(A) Prior Year	(B) Current Year (optional)
<b>1</b>	Aggregate fair market value of all non-exempt-use assets (see instructions for short tax year or assets held for part of year):		
<b>a</b>	Average monthly value of securities	<b>1a</b>	
<b>b</b>	Average monthly cash balances	<b>1b</b>	
<b>c</b>	Fair market value of other non-exempt-use assets	<b>1c</b>	
<b>d</b>	<b>Total</b> (add lines 1a, 1b, and 1c)	<b>1d</b>	
<b>e</b>	<b>Discount</b> claimed for blockage or other factors (explain in detail in <b>Part VI</b> ):		
<b>2</b>	Acquisition indebtedness applicable to non-exempt-use assets	<b>2</b>	
<b>3</b>	Subtract line 2 from line 1d	<b>3</b>	
<b>4</b>	Cash deemed held for exempt use. Enter 1-1/2% of line 3 (for greater amount, see instructions)	<b>4</b>	
<b>5</b>	Net value of non-exempt-use assets (subtract line 4 from line 3)	<b>5</b>	
<b>6</b>	Multiply line 5 by .035	<b>6</b>	
<b>7</b>	Recoveries of prior-year distributions	<b>7</b>	
<b>8</b>	<b>Minimum Asset Amount</b> (add line 7 to line 6)	<b>8</b>	

<b>Section C - Distributable Amount</b>		(A) Prior Year	Current Year
<b>1</b>	Adjusted net income for prior year (from Section A, line 8, Column A)	<b>1</b>	
<b>2</b>	Enter 85% of line 1	<b>2</b>	
<b>3</b>	Minimum asset amount for prior year (from Section B, line 8, Column A)	<b>3</b>	
<b>4</b>	Enter greater of line 2 or line 3	<b>4</b>	
<b>5</b>	Income tax imposed in prior year	<b>5</b>	
<b>6</b>	<b>Distributable Amount.</b> Subtract line 5 from line 4, unless subject to emergency temporary reduction (see instructions)	<b>6</b>	
<b>7</b>	<input type="checkbox"/> Check here if the current year is the organization's first as a non-functionally integrated Type III supporting organization (see instructions).		

**Part V** Type III Non-Functionally Integrated 509(a)(3) Supporting Organizations (continued)

Section D - Distributions	Current Year
<b>1</b> Amounts paid to supported organizations to accomplish exempt purposes	
<b>2</b> Amounts paid to perform activity that directly furthers exempt purposes of supported organizations, in excess of income from activity	
<b>3</b> Administrative expenses paid to accomplish exempt purposes of supported organizations	
<b>4</b> Amounts paid to acquire exempt-use assets	
<b>5</b> Qualified set-aside amounts (prior IRS approval required)	
<b>6</b> Other distributions (describe in <b>Part VI</b> ). See instructions.	
<b>7 Total annual distributions.</b> Add lines 1 through 6.	
<b>8</b> Distributions to attentive supported organizations to which the organization is responsive (provide details in <b>Part VI</b> ). See instructions.	
<b>9</b> Distributable amount for 2017 from Section C, line 6	
<b>10</b> Line 8 amount divided by line 9 amount	

Section E - Distribution Allocations (see instructions)	(i) Excess Distributions	(ii) Underdistributions Pre-2017	(iii) Distributable Amount for 2017
<b>1</b> Distributable amount for 2017 from Section C, line 6			
<b>2</b> Underdistributions, if any, for years prior to 2017 (reasonable cause required- explain in <b>Part VI</b> ). See instructions.			
<b>3</b> Excess distributions carryover, if any, to 2017			
<b>a</b>			
<b>b</b> From 2013			
<b>c</b> From 2014			
<b>d</b> From 2015			
<b>e</b> From 2016			
<b>f Total</b> of lines 3a through e			
<b>g</b> Applied to underdistributions of prior years			
<b>h</b> Applied to 2017 distributable amount			
<b>i</b> Carryover from 2012 not applied (see instructions)			
<b>j</b> Remainder. Subtract lines 3g, 3h, and 3i from 3f.			
<b>4</b> Distributions for 2017 from Section D, line 7: \$			
<b>a</b> Applied to underdistributions of prior years			
<b>b</b> Applied to 2017 distributable amount			
<b>c</b> Remainder. Subtract lines 4a and 4b from 4.			
<b>5</b> Remaining underdistributions for years prior to 2017, if any. Subtract lines 3g and 4a from line 2. For result greater than zero, explain in <b>Part VI</b> . See instructions.			
<b>6</b> Remaining underdistributions for 2017. Subtract lines 3h and 4b from line 1. For result greater than zero, explain in <b>Part VI</b> . See instructions.			
<b>7 Excess distributions carryover to 2018.</b> Add lines 3j and 4c.			
<b>8</b> Breakdown of line 7:			
<b>a</b> Excess from 2013			
<b>b</b> Excess from 2014			
<b>c</b> Excess from 2015			
<b>d</b> Excess from 2016			
<b>e</b> Excess from 2017			



**SCHEDULE D**  
**(Form 990)**

Department of the Treasury  
Internal Revenue Service

**Supplemental Financial Statements**

▶ **Complete if the organization answered "Yes" on Form 990, Part IV, line 6, 7, 8, 9, 10, 11a, 11b, 11c, 11d, 11e, 11f, 12a, or 12b.**  
▶ **Attach to Form 990.**

▶ **Go to [www.irs.gov/Form990](http://www.irs.gov/Form990) for instructions and the latest information.**

OMB No. 1545-0047

**2017**

**Open to Public Inspection**

Name of the organization **ARTISTS FOR HUMANITY, INC.** Employer identification number **\*\*-\*\*\*8434**

**Part I Organizations Maintaining Donor Advised Funds or Other Similar Funds or Accounts.** Complete if the organization answered "Yes" on Form 990, Part IV, line 6.

	(a) Donor advised funds	(b) Funds and other accounts
1 Total number at end of year .....		
2 Aggregate value of contributions to (during year) .....		
3 Aggregate value of grants from (during year) .....		
4 Aggregate value at end of year .....		
5 Did the organization inform all donors and donor advisors in writing that the assets held in donor advised funds are the organization's property, subject to the organization's exclusive legal control? .....		<input type="checkbox"/> Yes <input type="checkbox"/> No
6 Did the organization inform all grantees, donors, and donor advisors in writing that grant funds can be used only for charitable purposes and not for the benefit of the donor or donor advisor, or for any other purpose conferring impermissible private benefit? .....		<input type="checkbox"/> Yes <input type="checkbox"/> No

**Part II Conservation Easements.** Complete if the organization answered "Yes" on Form 990, Part IV, line 7.

1 Purpose(s) of conservation easements held by the organization (check all that apply).  
 Preservation of land for public use (e.g., recreation or education)     Preservation of a historically important land area  
 Protection of natural habitat     Preservation of a certified historic structure  
 Preservation of open space

2 Complete lines 2a through 2d if the organization held a qualified conservation contribution in the form of a conservation easement on the last day of the tax year.

	Held at the End of the Tax Year
a Total number of conservation easements .....	2a
b Total acreage restricted by conservation easements .....	2b
c Number of conservation easements on a certified historic structure included in (a) .....	2c
d Number of conservation easements included in (c) acquired after 7/25/06, and not on a historic structure listed in the National Register .....	2d

3 Number of conservation easements modified, transferred, released, extinguished, or terminated by the organization during the tax year ▶ \_\_\_\_\_

4 Number of states where property subject to conservation easement is located ▶ \_\_\_\_\_

5 Does the organization have a written policy regarding the periodic monitoring, inspection, handling of violations, and enforcement of the conservation easements it holds? .....

6 Staff and volunteer hours devoted to monitoring, inspecting, handling of violations, and enforcing conservation easements during the year ▶ \_\_\_\_\_

7 Amount of expenses incurred in monitoring, inspecting, handling of violations, and enforcing conservation easements during the year ▶ \$ \_\_\_\_\_

8 Does each conservation easement reported on line 2(d) above satisfy the requirements of section 170(h)(4)(B)(i) and section 170(h)(4)(B)(ii)? .....

9 In Part XIII, describe how the organization reports conservation easements in its revenue and expense statement, and balance sheet, and include, if applicable, the text of the footnote to the organization's financial statements that describes the organization's accounting for conservation easements.

**Part III Organizations Maintaining Collections of Art, Historical Treasures, or Other Similar Assets.** Complete if the organization answered "Yes" on Form 990, Part IV, line 8.

1a If the organization elected, as permitted under SFAS 116 (ASC 958), not to report in its revenue statement and balance sheet works of art, historical treasures, or other similar assets held for public exhibition, education, or research in furtherance of public service, provide, in Part XIII, the text of the footnote to its financial statements that describes these items.

b If the organization elected, as permitted under SFAS 116 (ASC 958), to report in its revenue statement and balance sheet works of art, historical treasures, or other similar assets held for public exhibition, education, or research in furtherance of public service, provide the following amounts relating to these items:

(i) Revenue included on Form 990, Part VIII, line 1 .....

(ii) Assets included in Form 990, Part X .....

2 If the organization received or held works of art, historical treasures, or other similar assets for financial gain, provide the following amounts required to be reported under SFAS 116 (ASC 958) relating to these items:

a Revenue included on Form 990, Part VIII, line 1 .....

b Assets included in Form 990, Part X .....

**Part III Organizations Maintaining Collections of Art, Historical Treasures, or Other Similar Assets** (continued)

3 Using the organization's acquisition, accession, and other records, check any of the following that are a significant use of its collection items (check all that apply):

- a  Public exhibition
- b  Scholarly research
- c  Preservation for future generations
- d  Loan or exchange programs
- e  Other \_\_\_\_\_

4 Provide a description of the organization's collections and explain how they further the organization's exempt purpose in Part XIII.

5 During the year, did the organization solicit or receive donations of art, historical treasures, or other similar assets to be sold to raise funds rather than to be maintained as part of the organization's collection?  Yes  No

**Part IV Escrow and Custodial Arrangements.** Complete if the organization answered "Yes" on Form 990, Part IV, line 9, or reported an amount on Form 990, Part X, line 21.

1a Is the organization an agent, trustee, custodian or other intermediary for contributions or other assets not included on Form 990, Part X?  Yes  No

b If "Yes," explain the arrangement in Part XIII and complete the following table:

	Amount
c Beginning balance	1c
d Additions during the year	1d
e Distributions during the year	1e
f Ending balance	1f

2a Did the organization include an amount on Form 990, Part X, line 21, for escrow or custodial account liability?  Yes  No

b If "Yes," explain the arrangement in Part XIII. Check here if the explanation has been provided on Part XIII

**Part V Endowment Funds.** Complete if the organization answered "Yes" on Form 990, Part IV, line 10.

	(a) Current year	(b) Prior year	(c) Two years back	(d) Three years back	(e) Four years back
1a Beginning of year balance					
b Contributions					
c Net investment earnings, gains, and losses					
d Grants or scholarships					
e Other expenditures for facilities and programs					
f Administrative expenses					
g End of year balance					

2 Provide the estimated percentage of the current year end balance (line 1g, column (a)) held as:

- a Board designated or quasi-endowment  \_\_\_\_\_ %
- b Permanent endowment  \_\_\_\_\_ %
- c Temporarily restricted endowment  \_\_\_\_\_ %

The percentages on lines 2a, 2b, and 2c should equal 100%.

3a Are there endowment funds not in the possession of the organization that are held and administered for the organization by:

	Yes	No
(i) unrelated organizations	3a(i)	
(ii) related organizations	3a(ii)	
b If "Yes" on line 3a(ii), are the related organizations listed as required on Schedule R?	3b	

4 Describe in Part XIII the intended uses of the organization's endowment funds.

**Part VI Land, Buildings, and Equipment.**

Complete if the organization answered "Yes" on Form 990, Part IV, line 11a. See Form 990, Part X, line 10.

Description of property	(a) Cost or other basis (investment)	(b) Cost or other basis (other)	(c) Accumulated depreciation	(d) Book value
1a Land		2,265,716.		2,265,716.
b Buildings		5,900,964.	1,915,459.	3,985,505.
c Leasehold improvements				
d Equipment		214,644.	212,977.	1,667.
e Other		87,735.	67,437.	20,298.
<b>Total.</b> Add lines 1a through 1e. (Column (d) must equal Form 990, Part X, column (B), line 10c.)				6,273,186.

**Part VII Investments - Other Securities.**

Complete if the organization answered "Yes" on Form 990, Part IV, line 11b. See Form 990, Part X, line 12.

(a) Description of security or category (including name of security)	(b) Book value	(c) Method of valuation: Cost or end-of-year market value
(1) Financial derivatives .....		
(2) Closely-held equity interests .....		
(3) Other .....		
(A)		
(B)		
(C)		
(D)		
(E)		
(F)		
(G)		
(H)		
<b>Total.</b> (Col. (b) must equal Form 990, Part X, col. (B) line 12.) ▶		

**Part VIII Investments - Program Related.**

Complete if the organization answered "Yes" on Form 990, Part IV, line 11c. See Form 990, Part X, line 13.

(a) Description of investment	(b) Book value	(c) Method of valuation: Cost or end-of-year market value
(1)		
(2)		
(3)		
(4)		
(5)		
(6)		
(7)		
(8)		
(9)		
<b>Total.</b> (Col. (b) must equal Form 990, Part X, col. (B) line 13.) ▶		

**Part IX Other Assets.**

Complete if the organization answered "Yes" on Form 990, Part IV, line 11d. See Form 990, Part X, line 15.

(a) Description	(b) Book value
(1)	
(2)	
(3)	
(4)	
(5)	
(6)	
(7)	
(8)	
(9)	
<b>Total.</b> (Column (b) must equal Form 990, Part X, col. (B) line 15.) ▶	

**Part X Other Liabilities.**

Complete if the organization answered "Yes" on Form 990, Part IV, line 11e or 11f. See Form 990, Part X, line 25.

1. (a) Description of liability	(b) Book value
(1) Federal income taxes	
(2) INTERCOMPANY LEASE PAYABLE TO AFH	
(3) EPICENTER, INC.	6,284,170.
(4)	
(5)	
(6)	
(7)	
(8)	
(9)	
<b>Total.</b> (Column (b) must equal Form 990, Part X, col. (B) line 25.) ▶	6,284,170.

2. Liability for uncertain tax positions. In Part XIII, provide the text of the footnote to the organization's financial statements that reports the organization's liability for uncertain tax positions under FIN 48 (ASC 740). Check here if the text of the footnote has been provided in Part XIII

**Part XI Reconciliation of Revenue per Audited Financial Statements With Revenue per Return.**

Complete if the organization answered "Yes" on Form 990, Part IV, line 12a.

<b>1</b>	Total revenue, gains, and other support per audited financial statements	<b>1</b>	4,321,951.
<b>2</b>	Amounts included on line 1 but not on Form 990, Part VIII, line 12:		
<b>a</b>	Net unrealized gains (losses) on investments	<b>2a</b>	
<b>b</b>	Donated services and use of facilities	<b>2b</b>	72,273.
<b>c</b>	Recoveries of prior year grants	<b>2c</b>	
<b>d</b>	Other (Describe in Part XIII.)	<b>2d</b>	-421.
<b>e</b>	Add lines <b>2a</b> through <b>2d</b>	<b>2e</b>	71,852.
<b>3</b>	Subtract line <b>2e</b> from line <b>1</b>	<b>3</b>	4,250,099.
<b>4</b>	Amounts included on Form 990, Part VIII, line 12, but not on line 1:		
<b>a</b>	Investment expenses not included on Form 990, Part VIII, line 7b	<b>4a</b>	
<b>b</b>	Other (Describe in Part XIII.)	<b>4b</b>	-17,590.
<b>c</b>	Add lines <b>4a</b> and <b>4b</b>	<b>4c</b>	-17,590.
<b>5</b>	Total revenue. Add lines <b>3</b> and <b>4c</b> . (This must equal Form 990, Part I, line 12.)	<b>5</b>	4,232,509.

**Part XII Reconciliation of Expenses per Audited Financial Statements With Expenses per Return.**

Complete if the organization answered "Yes" on Form 990, Part IV, line 12a.

<b>1</b>	Total expenses and losses per audited financial statements	<b>1</b>	4,224,409.
<b>2</b>	Amounts included on line 1 but not on Form 990, Part IX, line 25:		
<b>a</b>	Donated services and use of facilities	<b>2a</b>	72,273.
<b>b</b>	Prior year adjustments	<b>2b</b>	
<b>c</b>	Other losses	<b>2c</b>	
<b>d</b>	Other (Describe in Part XIII.)	<b>2d</b>	17,590.
<b>e</b>	Add lines <b>2a</b> through <b>2d</b>	<b>2e</b>	89,863.
<b>3</b>	Subtract line <b>2e</b> from line <b>1</b>	<b>3</b>	4,134,546.
<b>4</b>	Amounts included on Form 990, Part IX, line 25, but not on line 1:		
<b>a</b>	Investment expenses not included on Form 990, Part VIII, line 7b	<b>4a</b>	
<b>b</b>	Other (Describe in Part XIII.)	<b>4b</b>	421.
<b>c</b>	Add lines <b>4a</b> and <b>4b</b>	<b>4c</b>	421.
<b>5</b>	Total expenses. Add lines <b>3</b> and <b>4c</b> . (This must equal Form 990, Part I, line 18.)	<b>5</b>	4,134,967.

**Part XIII Supplemental Information.**

Provide the descriptions required for Part II, lines 3, 5, and 9; Part III, lines 1a and 4; Part IV, lines 1b and 2b; Part V, line 4; Part X, line 2; Part XI, lines 2d and 4b; and Part XII, lines 2d and 4b. Also complete this part to provide any additional information.

**PART X, LINE 2:**

THE ORGANIZATION ACCOUNTS FOR UNCERTAINTY IN INCOME TAXES IN ACCORDANCE WITH ASC TOPIC, INCOME TAXES. THIS STANDARD CLARIFIES THE ACCOUNTING FOR UNCERTAINTY IN TAX POSITIONS AND PRESCRIBES A RECOGNITION THRESHOLD AND MEASUREMENT ATTRIBUTE FOR THE COMBINING FINANCIAL STATEMENTS REGARDING A TAX POSITION TAKEN OR EXPECTED TO BE TAKEN IN A TAX RETURN. THE ORGANIZATION HAS DETERMINED THAT THERE ARE NO UNCERTAIN TAX POSITIONS WHICH QUALIFY FOR EITHER RECOGNITION OR DISCLOSURE IN THE COMBINING FINANCIAL STATEMENTS AT DECEMBER 31, 2017. THE ORGANIZATION'S INFORMATION RETURNS ARE SUBJECT TO EXAMINATION BY THE FEDERAL AND STATE JURISDICTIONS.

**PART XI, LINE 2D - OTHER ADJUSTMENTS:**



**Part XIII** Supplemental Information (continued)

INTERCOMPANY INTEREST EXPENSE - LEASE- TO AFH EPICENTER,	
INC.	-421.

PART XI, LINE 4B - OTHER ADJUSTMENTS:

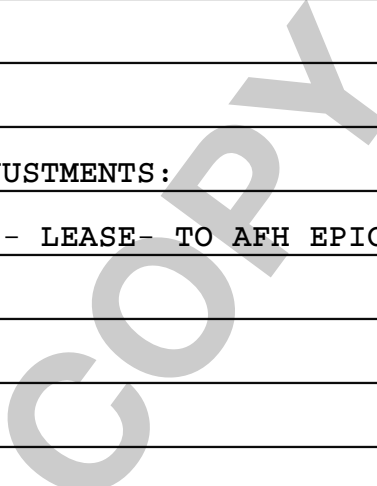
DIFFERENCE IN REVENUE DUE TO NETTING EVENT DIRECT EXPENSES	
AGAINST REVENUE	-17,590.

PART XII, LINE 2D - OTHER ADJUSTMENTS:

DIFFERENCE IN EXPENSES DUE TO NETTING EVENT DIRECT EXPENSES	
AGAINST REVENUE	17,590.

PART XII, LINE 4B - OTHER ADJUSTMENTS:

INTERCOMPANY INTEREST EXPENSE - LEASE- TO AFH EPICENTER,	
INC.	421.





**Part II Fundraising Events.** Complete if the organization answered "Yes" on Form 990, Part IV, line 18, or reported more than \$15,000 of fundraising event contributions and gross income on Form 990-EZ, lines 1 and 6b. List events with gross receipts greater than \$5,000.

		(a) Event #1	(b) Event #2	(c) Other events	(d) Total events (add col. (a) through col. (c))
		ANNUAL FUNDRAISER (event type)	(event type)	NONE (total number)	
Revenue	<b>1</b> Gross receipts .....	90,134.			90,134.
	<b>2</b> Less: Contributions .....	65,071.			65,071.
	<b>3</b> Gross income (line 1 minus line 2) .....	25,063.			25,063.
Direct Expenses	<b>4</b> Cash prizes .....				
	<b>5</b> Noncash prizes .....				
	<b>6</b> Rent/facility costs .....	8,303.			8,303.
	<b>7</b> Food and beverages .....	3,680.			3,680.
	<b>8</b> Entertainment .....	4,400.			4,400.
	<b>9</b> Other direct expenses .....	1,207.			1,207.
	<b>10</b> Direct expense summary. Add lines 4 through 9 in column (d) .....				17,590.
<b>11</b> Net income summary. Subtract line 10 from line 3, column (d) .....				7,473.	

**Part III Gaming.** Complete if the organization answered "Yes" on Form 990, Part IV, line 19, or reported more than \$15,000 on Form 990-EZ, line 6a.

		(a) Bingo	(b) Pull tabs/instant bingo/progressive bingo	(c) Other gaming	(d) Total gaming (add col. (a) through col. (c))
Revenue	<b>1</b> Gross revenue .....				
Direct Expenses	<b>2</b> Cash prizes .....				
	<b>3</b> Noncash prizes .....				
	<b>4</b> Rent/facility costs .....				
	<b>5</b> Other direct expenses .....				
	<b>6</b> Volunteer labor .....	<input type="checkbox"/> Yes _____ % <input type="checkbox"/> No	<input type="checkbox"/> Yes _____ % <input type="checkbox"/> No	<input type="checkbox"/> Yes _____ % <input type="checkbox"/> No	
	<b>7</b> Direct expense summary. Add lines 2 through 5 in column (d) .....				
	<b>8</b> Net gaming income summary. Subtract line 7 from line 1, column (d) .....				

**9** Enter the state(s) in which the organization conducts gaming activities: \_\_\_\_\_  
**a** Is the organization licensed to conduct gaming activities in each of these states?  Yes  No  
**b** If "No," explain: \_\_\_\_\_

**10a** Were any of the organization's gaming licenses revoked, suspended, or terminated during the tax year?  Yes  No  
**b** If "Yes," explain: \_\_\_\_\_





**SCHEDULE J  
(Form 990)**

**Compensation Information**

OMB No. 1545-0047

**2017**

Open to Public Inspection

For certain Officers, Directors, Trustees, Key Employees, and Highest Compensated Employees

▶ Complete if the organization answered "Yes" on Form 990, Part IV, line 23.

▶ Attach to Form 990.

▶ Go to [www.irs.gov/Form990](http://www.irs.gov/Form990) for instructions and the latest information.

Department of the Treasury  
Internal Revenue Service

Name of the organization

**ARTISTS FOR HUMANITY, INC.**

Employer identification number

**\*\* - \*\*\* 8434**

**Part I Questions Regarding Compensation**

**1a** Check the appropriate box(es) if the organization provided any of the following to or for a person listed on Form 990, Part VII, Section A, line 1a. Complete Part III to provide any relevant information regarding these items.

- |  |   |
|--|---|
| <input type="checkbox"/> First-class or charter travel             | <input type="checkbox"/> Housing allowance or residence for personal use    |
| <input type="checkbox"/> Travel for companions                     | <input type="checkbox"/> Payments for business use of personal residence    |
| <input type="checkbox"/> Tax indemnification and gross-up payments | <input type="checkbox"/> Health or social club dues or initiation fees      |
| <input type="checkbox"/> Discretionary spending account            | <input type="checkbox"/> Personal services (such as, maid, chauffeur, chef) |

**b** If any of the boxes on line 1a are checked, did the organization follow a written policy regarding payment or reimbursement or provision of all of the expenses described above? If "No," complete Part III to explain .....

**2** Did the organization require substantiation prior to reimbursing or allowing expenses incurred by all directors, trustees, and officers, including the CEO/Executive Director, regarding the items checked on line 1a? .....

**3** Indicate which, if any, of the following the filing organization used to establish the compensation of the organization's CEO/Executive Director. Check all that apply. Do not check any boxes for methods used by a related organization to establish compensation of the CEO/Executive Director, but explain in Part III.

- |  |   |
|--|---|
| <input type="checkbox"/> Compensation committee              | <input type="checkbox"/> Written employment contract                                |
| <input type="checkbox"/> Independent compensation consultant | <input type="checkbox"/> Compensation survey or study                               |
| <input type="checkbox"/> Form 990 of other organizations     | <input checked="" type="checkbox"/> Approval by the board or compensation committee |

**4** During the year, did any person listed on Form 990, Part VII, Section A, line 1a, with respect to the filing organization or a related organization:

- a** Receive a severance payment or change-of-control payment? .....
- b** Participate in, or receive payment from, a supplemental nonqualified retirement plan? .....
- c** Participate in, or receive payment from, an equity-based compensation arrangement? .....
- If "Yes" to any of lines 4a-c, list the persons and provide the applicable amounts for each item in Part III.

**Only section 501(c)(3), 501(c)(4), and 501(c)(29) organizations must complete lines 5-9.**

**5** For persons listed on Form 990, Part VII, Section A, line 1a, did the organization pay or accrue any compensation contingent on the revenues of:

- a** The organization? .....
- b** Any related organization? .....
- If "Yes" on line 5a or 5b, describe in Part III.

**6** For persons listed on Form 990, Part VII, Section A, line 1a, did the organization pay or accrue any compensation contingent on the net earnings of:

- a** The organization? .....
- b** Any related organization? .....
- If "Yes" on line 6a or 6b, describe in Part III.

**7** For persons listed on Form 990, Part VII, Section A, line 1a, did the organization provide any nonfixed payments not described on lines 5 and 6? If "Yes," describe in Part III .....

**8** Were any amounts reported on Form 990, Part VII, paid or accrued pursuant to a contract that was subject to the initial contract exception described in Regulations section 53.4958-4(a)(3)? If "Yes," describe in Part III .....

**9** If "Yes" on line 8, did the organization also follow the rebuttable presumption procedure described in Regulations section 53.4958-6(c)? .....

	Yes	No
<b>1b</b>		
<b>2</b>		
<b>4a</b>		X
<b>4b</b>		X
<b>4c</b>		X
<b>5a</b>		X
<b>5b</b>		X
<b>6a</b>		X
<b>6b</b>		X
<b>7</b>		X
<b>8</b>		X
<b>9</b>		

LHA For Paperwork Reduction Act Notice, see the Instructions for Form 990.

Schedule J (Form 990) 2017









**Part IV Business Transactions Involving Interested Persons.**

Complete if the organization answered "Yes" on Form 990, Part IV, line 28a, 28b, or 28c.

(a) Name of interested person	(b) Relationship between interested person and the organization	(c) Amount of transaction	(d) Description of transaction	(e) Sharing of organization's revenues?	
				Yes	No
H Aidan Hodgson	Daughter of Executive	78,686.	SALARY AND		X

**Part V Supplemental Information**

Provide additional information for responses to questions on Schedule L (see instructions).

SCH L, PART IV, BUSINESS TRANSACTIONS INVOLVING INTERESTED PERSONS:

(A) NAME OF PERSON: Haidan Hodgson

(B) RELATIONSHIP BETWEEN INTERESTED PERSON AND ORGANIZATION:

Daughter of Executive Art Dir and President is employee of the organization

(D) DESCRIPTION OF TRANSACTION: SALARY AND BENEFITS PAID FOR EMPLOYMENT

at the organization, which is determined by the executive/ artistic

director and president consistent with the other employees' compensation.

The board of directors also reviews the organization's budget, which

includes proposed salaries for all employees.

**SCHEDULE M  
(Form 990)**

**Noncash Contributions**

OMB No. 1545-0047

**2017**

Open To Public Inspection

Department of the Treasury  
Internal Revenue Service

- ▶ Complete if the organizations answered "Yes" on Form 990, Part IV, lines 29 or 30.
- ▶ Attach to Form 990.
- ▶ Go to [www.irs.gov/Form990](http://www.irs.gov/Form990) for the latest information.

Name of the organization **ARTISTS FOR HUMANITY, INC.** Employer identification number **\*\*-\*\*\*8434**

**Part I Types of Property**

	(a) Check if applicable	(b) Number of contributions or items contributed	(c) Noncash contribution amounts reported on Form 990, Part VIII, line 1g	(d) Method of determining noncash contribution amounts
1 Art - Works of art				
2 Art - Historical treasures				
3 Art - Fractional interests				
4 Books and publications				
5 Clothing and household goods				
6 Cars and other vehicles				
7 Boats and planes				
8 Intellectual property				
9 Securities - Publicly traded	X	13	31,726. FMV	
10 Securities - Closely held stock				
11 Securities - Partnership, LLC, or trust interests				
12 Securities - Miscellaneous				
13 Qualified conservation contribution - Historic structures				
14 Qualified conservation contribution - Other				
15 Real estate - Residential				
16 Real estate - Commercial				
17 Real estate - Other				
18 Collectibles				
19 Food inventory				
20 Drugs and medical supplies				
21 Taxidermy				
22 Historical artifacts				
23 Scientific specimens				
24 Archeological artifacts				
25 Other ( )				
26 Other ( )				
27 Other ( )				
28 Other ( )				

29 Number of Forms 8283 received by the organization during the tax year for contributions for which the organization completed Form 8283, Part IV, Donee Acknowledgement **29**

	Yes	No
30a During the year, did the organization receive by contribution any property reported in Part I, lines 1 through 28, that it must hold for at least three years from the date of the initial contribution, and which isn't required to be used for exempt purposes for the entire holding period?		X
b If "Yes," describe the arrangement in Part II.		
31 Does the organization have a gift acceptance policy that requires the review of any nonstandard contributions?		X
32a Does the organization hire or use third parties or related organizations to solicit, process, or sell noncash contributions?		X
b If "Yes," describe in Part II.		
33 If the organization didn't report an amount in column (c) for a type of property for which column (a) is checked, describe in Part II.		

LHA For Paperwork Reduction Act Notice, see the Instructions for Form 990.

Schedule M (Form 990) 2017



**SCHEDULE N**  
**(Form 990 or 990-EZ)**

Department of the Treasury  
Internal Revenue Service

**Liquidation, Termination, Dissolution, or Significant Disposition of Assets**

- ▶ Complete if the organization answered "Yes" on Form 990, Part IV, lines 31 or 32; or Form 990-EZ, line 36.
- ▶ Attach certified copies of any articles of dissolution, resolutions, or plans.
- ▶ Attach to Form 990 or 990-EZ.
- ▶ Go to [www.irs.gov/Form990](http://www.irs.gov/Form990) for the latest information.

OMB No. 1545-0047

**2017**

Open to Public Inspection

Name of the organization

ARTISTS FOR HUMANITY, INC.

Employer identification number

\*\*-\*\*8434

**Part I** Liquidation, Termination, or Dissolution. Complete this part if the organization answered "Yes" on Form 990, Part IV, line 31, or Form 990-EZ, line 36. Part I can be duplicated if additional space is needed.

1	(a) Description of asset(s) distributed or transaction expenses paid	(b) Date of distribution	(c) Fair market value of asset(s) distributed or amount of transaction expenses	(d) Method of determining FMV for asset(s) distributed or transaction expenses	(e) EIN of recipient	(f) Name and address of recipient	(g) IRC section of recipient(s) (if tax-exempt) or type of entity	Yes	No
								2a	
								2b	
								2c	
								2d	

- 2 Did or will any officer, director, trustee, or key employee of the organization:
- a Become a director or trustee of a successor or transferee organization? .....
  - b Become an employee of, or independent contractor for, a successor or transferee organization? .....
  - c Become a direct or indirect owner of a successor or transferee organization? .....
  - d Receive, or become entitled to, compensation or other similar payments as a result of the organization's liquidation, termination, or dissolution? .....
  - e If the organization answered "Yes" to any of the questions on lines 2a through 2d, provide the name of the person involved and explain in Part III. ▶

For Paperwork Reduction Act Notice, see the Instructions for Form 990 or Form 990-EZ.

Schedule N (Form 990 or 990-EZ) 2017

LHA

732151 09-08-17

**Part I** Liquidation, Termination, or Dissolution (continued)

- Note:** If the organization distributed all of its assets during the tax year, then Form 990, Part X, column (B), line 16 (Total assets), and line 26 (Total liabilities), should equal -0-
- 3 Did the organization distribute its assets in accordance with its governing instrument(s)? If "No," describe in Part III.
  - 4a Is the organization required to notify the attorney general or other appropriate state official of its intent to dissolve, liquidate, or terminate?
  - 4b If "Yes," did the organization provide such notice?
  - 5 Did the organization discharge or pay all of its liabilities in accordance with state laws?
  - 6a Did the organization have any tax-exempt bonds outstanding during the year?
  - 6b If "Yes" to line 6a, did the organization discharge or defease all of its tax-exempt bond liabilities during the tax yr in accordance with the Internal Revenue Code and state laws?
  - 6c If "Yes" on line 6b, describe in Part III how the organization defeased or otherwise settled these liabilities. If "No" on line 6b, explain in Part III.

	Yes	No
3		
4a		
4b		
5		
6a		
6b		

**Part II** Sale, Exchange, Disposition, or Other Transfer of More Than 25% of the Organization's Assets. Complete this part if the organization answered "Yes" on Form 990, Part IV, line 32, or Form 990-EZ, line 36. Part II can be duplicated if additional space is needed.

1	(a) Description of asset(s) distributed or transaction expenses paid	(b) Date of distribution	(c) Fair market value of asset(s) distributed or amount of transaction expenses	(d) Method of determining FMV for asset(s) distributed or transaction expenses	(e) EIN of recipient	(f) Name and address of recipient	(g) IRC section of recipient(s) (if tax-exempt or type of entity)
	IN-KIND CAPITAL CONTRIBUTION OF LAND, BUILDING, CONSTRUCTION IN PROCESS, AND DEBT ISSUANCE COSTS	09/20/17	7,145,070.	NET BOOK VALUE	** - *** 6425	AFH EPICENTER, INC. 100 WEST SECOND STREET BOSTON, MA 02127	501(C)(3)

**2** Did or will any officer, director, trustee, or key employee of the organization:

- a Become a director or trustee of a successor or transferee organization?
- b Become an employee of, or independent contractor for, a successor or transferee organization?
- c Become a direct or indirect owner of a successor or transferee organization?
- d Receive, or become entitled to, compensation or other similar payments as a result of the organization's significant disposition of assets?
- e If the organization answered "Yes" to any of the questions on lines 2a through 2d, provide the name of the person involved and explain in Part III.

	Yes	No
2a	X	
2b	X	
2c	X	
2d	X	

**SEE PART III**

**Part III Supplemental Information.** Provide the information required by Part I, lines 2e and 6c, and Part II, line 2e.  
Also complete this part to provide any additional information.

PART II, LINE 2E:

YARO PAN AND SUSAN RODGERSON

PART II, LINE 2E:

YARO PAN IS A BOARD MEMBER OF BOTH AFH AND AFH EPICENTER. SUSAN RODGERSON IS AN OFFICER AND EMPLOYEE OF AFH AND A BOARD MEMBER AND OFFICER OF AFH EPICENTER.

COPY

**SCHEDULE O**  
**(Form 990 or 990-EZ)**

Department of the Treasury  
Internal Revenue Service

**Supplemental Information to Form 990 or 990-EZ**

Complete to provide information for responses to specific questions on  
Form 990 or 990-EZ or to provide any additional information.

▶ Attach to Form 990 or 990-EZ.

▶ Go to [www.irs.gov/Form990](http://www.irs.gov/Form990) for the latest information.

OMB No. 1545-0047

**2017**

Open to Public  
Inspection

Name of the organization

ARTISTS FOR HUMANITY, INC.

Employer identification number

\*\* - \*\*\*8434

FORM 990, PART I, LINE 1, DESCRIPTION OF ORGANIZATION MISSION:

AND IN BUSINESS.

FORM 990, PART III, LINE 4A, PROGRAM SERVICE ACCOMPLISHMENTS:

ENTERPRISE THAT HELPS THEM DEVELOP 21ST CENTURY SKILLS FOR SCHOOL AND  
THE GLOBAL WORKFORCE. THE INDICATORS OF SUCCESS ARE POWERFUL: 100% OF  
ARTISTS FOR HUMANITY HIGH SCHOOL SENIOR EMPLOYEES GRADUATE (COMPARED  
WITH 65.9% OF PEERS AT BOSTON PUBLIC HIGH SCHOOLS); AND 95% DIRECTLY  
SEGUE TO POST-SECONDARY EDUCATION.

AFH LAUNCHED A CAPITAL CAMPAIGN IN 2014 TO EXPAND ITS EXISTING  
FACILITIES. THE IMPRESSIVE SUPPORT GENERATED TO-DATE IS REFLECTED IN  
THE INCREASED GRANTS AND NET ASSETS REPORTED (\$12MM+). THE EXPANSION  
ALLOWS AFH TO DOUBLE THE SIZE OF THE YOUTH ENGAGEMENT (CURRENT WAITING  
LISTS OF 150+), HIRE MORE ARTISTS & SOCIAL ENTREPRENEURS TO LEAD  
PROGRAMMING, AND EXPAND PARTNERING EFFORTS WITH EDUCATIONAL  
INSTITUTIONS.

FORM 990, PART VI, SECTION B, LINE 11B:

THE ORGANIZATION PROVIDES THE FORM 990 TO ALL BOARD MEMBERS AND GIVES THEM  
THE OPPORTUNITY TO COMMENT ON THE FORM BEFORE SUBMISSION. THE FORM 990 IS  
FIRST REVIEWED IN DETAIL BY SENIOR MANAGEMENT.

FORM 990, PART VI, SECTION B, LINE 12C:

MEMBERS OF THE BOARD ARE REQUIRED TO ANNUALLY SIGN OFF ON THE CONFLICT OF  
INTEREST QUESTIONNAIRE. ALL BOARD MEMBER RESPONSES ARE TRACKED IN A  
SPREADSHEET.



Name of the organization ARTISTS FOR HUMANITY, INC.	Employer identification number **-***8434
--	--

FORM 990, PART VI, SECTION B, LINE 15:

THE BOARD OF DIRECTORS ANNUALLY REVIEWS THE SALARY OF SUSAN RODGERSON, EXECUTIVE DIRECTOR. THE BOARD OF DIRECTORS ALSO REVIEWS THE ORGANIZATIONAL BUDGET, WHICH INCLUDES PROPOSED SALARIES FOR ALL EMPLOYEES.

FORM 990, PART VI, SECTION C, LINE 19:

THE ORGANIZATION MAKES ITS GOVERNING DOCUMENTS, CONFLICT OF INTEREST POLICY, FINANCIAL STATEMENTS AND FORM 990 AVAILABLE TO THE PUBLIC UPON REQUEST AND MOST ARE ALSO AVAILABLE ON THE INTERNET.

FORM 990, PART XI, LINE 9, CHANGES IN NET ASSETS:

DONATED CAPITAL CONTRIBUTION	-7,145,070.
------------------------------	-------------

FORM 990, PART XII LINE 2C:

PROCESS HAS NOT CHANGED FROM PRIOR YEAR.





**Part V Transactions With Related Organizations.** Complete if the organization answered "Yes" on Form 990, Part IV, line 34, 35b, or 36.

**Note:** Complete line 1 if any entity is listed in Parts II, III, or IV of this schedule.

- 1** During the tax year, did the organization engage in any of the following transactions with one or more related organizations listed in Parts II-IV?
  - a** Receipt of (i) interest, (ii) annuities, (iii) royalties, or (iv) rent from a controlled entity
  - b** Gift, grant, or capital contribution to related organization(s)
  - c** Gift, grant, or capital contribution from related organization(s)
  - d** Loans or loan guarantees to or for related organization(s)
  - e** Loans or loan guarantees by related organization(s)

	1a	1b	1c	1d	1e	1f	1g	1h	1i	1j	1k	1l	1m	1n	1o	1p	1q	1r	1s	Yes	No
<b>f</b> Dividends from related organization(s)											X										
<b>g</b> Sale of assets to related organization(s)																					
<b>h</b> Purchase of assets from related organization(s)																					
<b>i</b> Exchange of assets with related organization(s)																					
<b>j</b> Lease of facilities, equipment, or other assets to related organization(s)																					
<b>k</b> Lease of facilities, equipment, or other assets from related organization(s)											X										
<b>l</b> Performance of services or membership or fundraising solicitations for related organization(s)													X								
<b>m</b> Performance of services or membership or fundraising solicitations by related organization(s)													X								
<b>n</b> Sharing of facilities, equipment, mailing lists, or other assets with related organization(s)													X								
<b>o</b> Sharing of paid employees with related organization(s)													X								
<b>p</b> Reimbursement paid to related organization(s) for expenses																X					
<b>q</b> Reimbursement paid by related organization(s) for expenses																	X				
<b>r</b> Other transfer of cash or property to related organization(s)																					X
<b>s</b> Other transfer of cash or property from related organization(s)																					X

**2** If the answer to any of the above is "Yes," see the instructions for information on who must complete this line, including covered relationships and transaction thresholds.

(a) Name of related organization	(b) Transaction type (a-s)	(c) Amount involved	(d) Method of determining amount involved
(1) AFH EPICENTER, INC.	B	6,908,939.	IN-KIND CAP. CONTRIB-NET BK VALUE
(2) AFH EPICENTER, INC.	D	0.	GUARANTEE NOTES PAY. OF \$15,682K
(3) AFH EPICENTER, INC.	D	0.	\$3.9M LOAN AGREEMENT - NO DRAWS
(4) AFH EPICENTER, INC.	E	6,284,170.	INTERCOMPANY LEASE PAYABLE
(5) AFH EPICENTER, INC.	K	6,284,170.	INTERCOMPANY LEASE PAYABLE
(6) AFH EPICENTER, INC.	Q	1,966,699.	TRANSFER OF CIP&DEBT ISSUE COSTS



