

Bodie Island Lighthouse Scavenger Hunt Answer Key

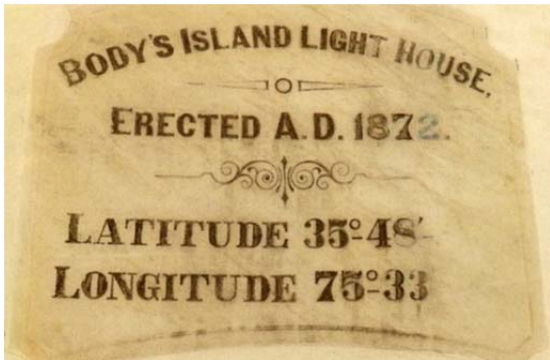
1. The date over the doorway is when construction began on the third Bodie Island Lighthouse – 1871.



2. There are two black bands on the Bodie Island Lighthouse.



3. The building is the Lighthouse Keepers' Quarters.

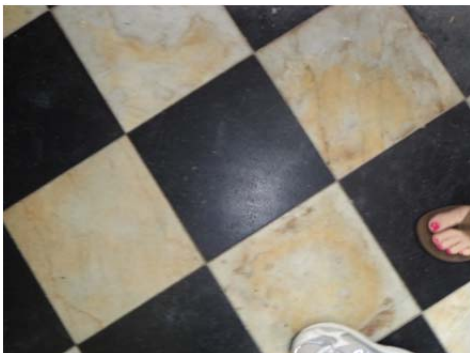


4. It was erected in 1872.

5. 2009 <http://www.nps.gov/caha/planyourvisit/bodie-island-lighthouse-restoration-project.htm>

6. Latitude 35 degrees 48' Longitude 75 degrees 33'.

(see photo above for answer #4)



7. The stairs are black.



8. The floor at the base of the stairs is black and white.



9. Snakes!

10. Counting the five granite steps outside the lighthouse plus 214 inside equals 219 steps.

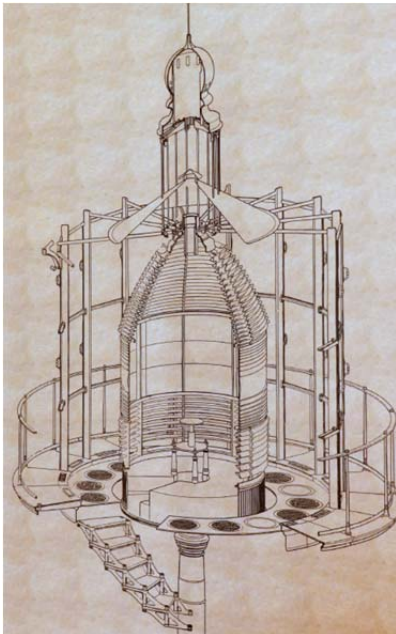
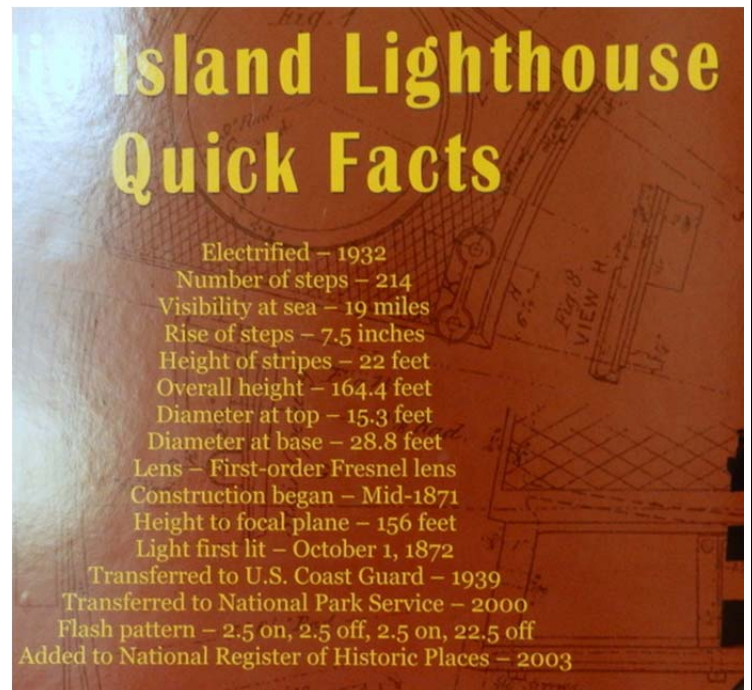
[See graphic for question #10, which is on the wall in the Visitors' Center at Bodie Island Lighthouse.]

11. Third

<http://www.nps.gov/caha/historyculture/bodie-island-light-station.htm>

12. "Fearing that the 80-foot tower would be used by Union forces, retreating Confederate troops blew it up in 1861."

<http://www.nps.gov/caha/historyculture/bodie-island-light-station.htm>



13. First Order

14. 2013 <http://www.nps.gov/caha/historyculture/bodie-island-light-station.htm>

Created by the Outer Banks Lighthouse Society

<http://www.outerbankslighthousesociety.org>

Questions by Gayle Keresey /

Pictures by Rebecca Taylor & Diana Chappell

