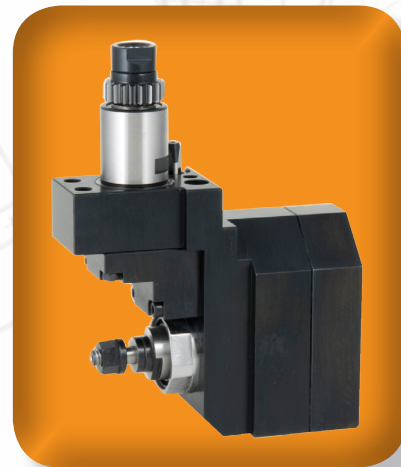




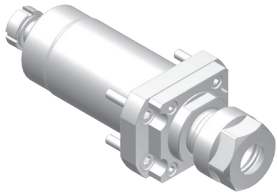
GEN MILL | GEN TURN™
BY GANESH

SWISS TOOLING



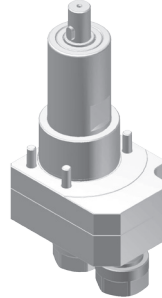
20 Thompson Rd | East Windsor | CT 06088
1.800.249.5662 | 860.623.4132 Fax
www.komaprecision.com | info@komaprecision.com

CB25M/CB32M/CB36M TOOLING FOR CROSS TOOL POST



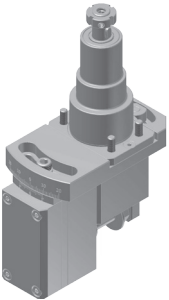
CCB121000
Cross drilling/milling unit

RATIO 1 : 1
RPM(MAX) 6000
TOOL CLAMPING ER20A



CCB162000
2 spindle cross drilling/milling unit

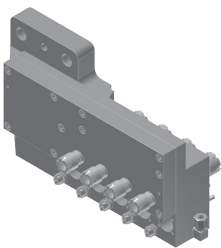
RATIO 1 : 1
RPM(MAX) 6000
TOOL CLAMPING ER16A



CCB130100
Gear hobbing unit

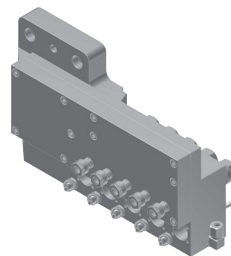
RATIO 1 : 1
RPM(MAX) 6000
CUTTER SHANK Ø10mm
CUTTER OD(MAX) Ø30mm
CUTTER LENGTH 20mm
ANGLE ADJUSTMENT ±20°

CB25M/CB32M/CB36M TOOLING FOR FRONT WORKING TOOL POST



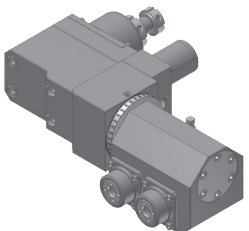
CCB562400
Front working tool base
(4 Live tool + 5 Fixed tool)

RATIO 1 : 2
RPM(MAX) 6000
TOOL CLAMPING
Front side : ER20M
Back side : ER16M
DRILL SLEEVE FOR FIXED TOOL PORT :
KDA2502060A (Single)
KDA2502100A (Double)
TOOL PORT / FIXED TOOL : T21~T25
LIVE TOOL : T26~T29



CCB566500
Front working tool base
(5 Live tool + 5 Fixed tool)

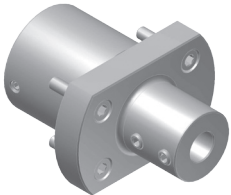
RATIO 1 : 2
RPM(MAX) 6000
TOOL CLAMPING
Front side : ER16A
Back side : ER11A
DRILL SLEEVE FOR FIXED TOOL PORT :
KDA2502060A (Single)
KDA2502100A (Double)
TOOL PORT / FIXED TOOL : T21~T25
LIVE TOOL : T26~T30



CCB491200
2 spindle drilling/milling unit

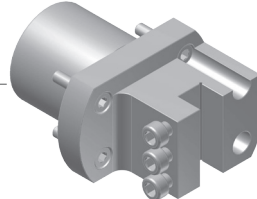
RATIO 1 : 1
RPM(MAX) 6000
TOOL CLAMPING ER11
ANGLE ADJUSTMENT ±180°
REMARK Only available for 3 Live tool +
5 Fixed tool base

CB25M/CB32M/CB36M TOOLING FOR BACK TOOL POST



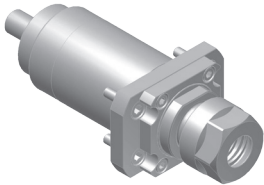
CCB601120
Boring bar sleeve

TOOL SHANK \varnothing 42.0mm
BORING BAR SHANK \varnothing 12.0mm



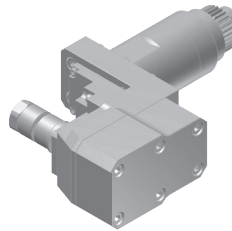
CCB611120
Turning tool holder

TOOL SHANK \varnothing 42.0mm
BITE HOLDER SHANK 12x12mm



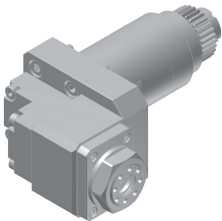
CCB721000
Drilling/milling unit

RATIO 1 : 1
RPM(MAX) 6000
TOOL CLAMPING ER20A



CCB730000
Slotting unit

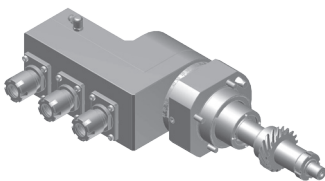
RATIO 1 : 0.75
RPM(MAX) 3000
SAW OD(MAX) \varnothing 45mm
SAW ARBOR SHANK \varnothing 12.7mm



CCB761000
Cross drilling/milling unit

RATIO 1 : 1
RPM(MAX) 3000
TOOL CLAMPING ER16

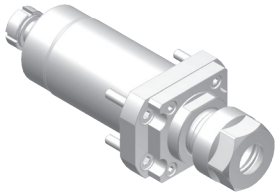
CY2-52MB TOOLING FOR BACK WORKING TOOL POST



CCY496300
3 spindle drilling/milling unit

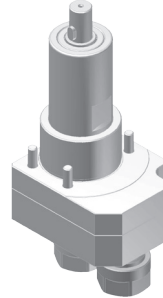
RATIO 1 : 1
RPM(MAX) 6000
TOOL CLAMPING ER16M
ANGLE ADJUSTMENT \pm 90°

NCY25M/NCY32M/NCY36M TOOLING FOR CROSS TOOL POST



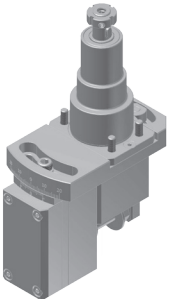
CCB121000
Cross drilling/milling unit

RATIO 1 : 1
RPM(MAX) 6000
TOOL CLAMPING ER20A



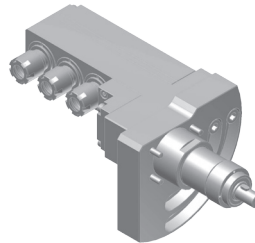
CCB162000
2 spindle cross drilling/ milling unit

RATIO 1 : 1
RPM(MAX) 6000
TOOL CLAMPING ER16A



CCB130100
Gear hobbing unit

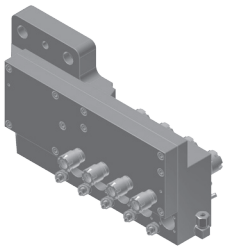
RATIO 1 : 1
RPM(MAX) 6000
CUTTER SHANK Ø10mm
CUTTER OD(MAX) Ø30mm
CUTTER LENGTH 20mm
ANGLE ADJUSTMENT ±20°



CCY463000
3 spindle drilling/milling unit

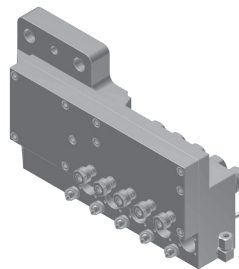
RATIO 1 : 1
RPM(MAX) 3000
TOOL CLAMPING ER16M
ANGLE ADJUSTMENT 0~90°

NCY25M/NCY32M/NCY36M TOOLING FOR FRONT WORKING TOOL POST



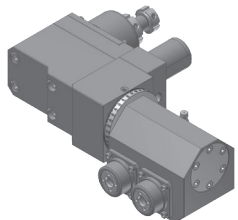
CCB562400
Front working tool base
(4 Live tool + 5 Fixed tool)

RATIO 1 : 2
RPM(MAX) 6000
TOOL CLAMPING
Front side : ER20M
Back side : ER16M
DRILL SLEEVE FOR FIXED TOOL PORT :
KDA2502060A (Single)
KDA2502100A (Double)
TOOL PORT / FIXED TOOL : T21~T25
LIVE TOOL : T26~T29



CCB566500
Front working tool base
(5 Live tool + 5 Fixed tool)

RATIO 1 : 2
RPM(MAX) 6000
TOOL CLAMPING
Front side : ER16A
Back side : ER11A
DRILL SLEEVE FOR FIXED TOOL PORT :
KDA2502060A (Single)
KDA2502100A (Double)
TOOL PORT / FIXED TOOL : T21~T25
LIVE TOOL : T26~T30



CCB491200
2 spindle drilling/milling unit

RATIO 1 : 1
RPM(MAX) 6000
TOOL CLAMPING ER11
ANGLE ADJUSTMENT ±180°
REMARK Only available for 3 Live tool +
5 Fixed tool base