

elbo controllii 

**Hathor**  
**SIX**

## TOOL PRESETTER

Enhanced Measure & Inspect | Floor Model



- ▶ Increased measuring range
- ▶ New 15" TFT touch screen
- ▶ Improved operating system
- ▶ Easy to use
- ▶ Quickly measure length, diameter, radius & angles
- ▶ Precision spindle system is fully interchangeable
- ▶ Elbo Controllii designed optical scales | slideways and revolutionary vision system guarantees the highest degree of accuracy
- ▶ Can store up to 9,999 different NC machine specifications and 1 million tool sets
- ▶ TD SIX Software  
Tool data management software for precision measuring, tool inspection, tool data management and communication

 **KOMA**  
KOMAPRECISION.COM

20 Thompson Rd | East Windsor | CT 06088  
1.800.249.5662 | 860.623.4132 Fax  
[www.komaprecision.com](http://www.komaprecision.com) | [info@komaprecision.com](mailto:info@komaprecision.com)



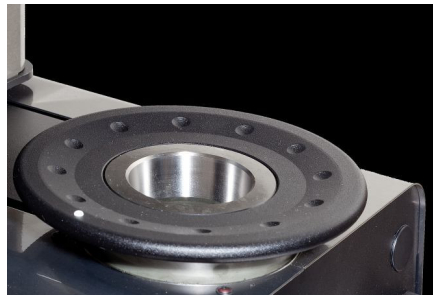
### MANUAL AXES MOVEMENT

Axis un-clamping by means of a single pneumatic control system.



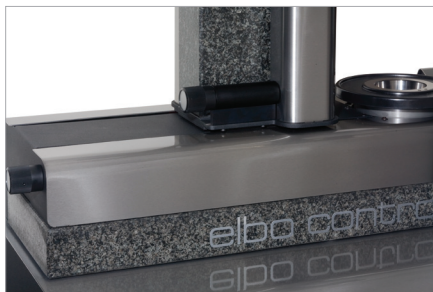
### ERGONOMICALLY DESIGNED CONTROLS

Ergonomically designed micrometric hand wheels for X and Z axes allows for precise and smooth fixed-target and auto adjustments. The operator can move the axis simultaneously or independently.



### PRECISION SPINDLE SYSTEM

All Elbo Controlli precision spindle systems are fully interchangeable. The one-piece cartridge eliminates the need for adapters and the errors associated with their use.



### NATURAL GRANITE

All Elbo Controlli tool presetters utilize natural granite for the column and base to insure the best thermal stability. This solid base construction, together with Elbo Controlli's excellence in manufacturing, all but eliminates the need for re-alignments and guarantees proper functioning over the life of the unit.

## HATHOR SIX CONSTRUCTION

Floor Model

Natural Granite Base & Column

Stainless Steel Mechanical Elements

Dimensions 1,240 mm L x 558mm D x 1,840mm H

Weight 135 Kg / 297 lbs

### AXIS MOVEMENT

X Axis (Radial) = 200mm / 7.874 in

**NEW Increased Measuring Range** Z Axis = 600mm / 23.62 in

Resolution X & Z Axis - 1 µm

Double Pneumatic Axis Clamping

Manual Rapid & Fine Adjustment Movement

### SPINDLE

Interchangeable ISO40 or 50 for Different Tapers

Optional Interchangeable Holders Available - HSK, VDI, Capto

Pneumatic Mechanical Brakes with Radial Compensation of Clamping Force

Concentricity - 2µm

Maximum Tool Weight 40kg / 88 lbs.

Tool Clamping - Automatic Pull-Stud Recognition

### NEW OPERATING SYSTEM

**NEW** 15" TFT Touch Screen

INTEL®

SSD Data Storage

Connectivity - (2) RS-232 Printer / PC

LINUX

Printer Support

Capable of Storing 9,999 Different Machine Specifications

Capable of Storing 1M Different Tool Specifications

### CAPABILITIES

Measure - Full Screen Auto Targeting

Measure - X&Z Axis Focusing Control Bar

Measure - Automatic Radius & Angle Computing Cycle

Measure - Radius/Diameter, MM/Inches, Absolute/Incremental Modes

Measure - Analog & Digital Visualization

Measure - Tool Profile Photograph - Difference Between Cutting Edges

Optical Autofocus to determine largest and widest X + Z dimensions

Measure radial and axial runout

Inspection - 4 Color Tool Inspection

### VISION SYSTEM

Telecentric Lens for Accurate Dimensional Measurements / C-MOS Image Sensor with 0.001mm resolution

Diascopic Illuminator for Greater Contrast and Enhanced Clarity for Geometrical Profiling when Measuring

Episcopic Illuminator to Best Expose Tool Surfaces for Inspection

Cutting Edge Inspection for wear and tear

10.4" Color LCD Display Screen

30x Magnification | 15" TFT LCD Touch Screen

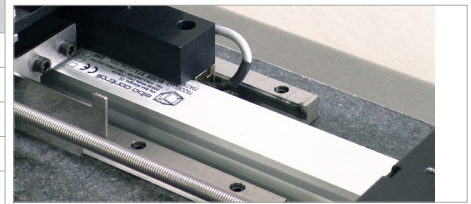
### TD SIX SOFTWARE

Tool List Management / Tool Sets & Post Processor Universal Generator

CNC Machine Origin Management

RFID Tool Detection Designed for Systems Like Balluff, etc.

Free software upgrades



### SLIDEWAYS / OPTICAL SCALES

Elbo Controlli designed optical scales incorporated with a double rail system for the X axis movement with 3 double recirculating ball bearing sliding block grant the highest degree of accuracy. Both X & Z axes have a resolution of 1 µm.



### PROPRIETARY VISION SYSTEM

High resolution camera system utilizing Elbo Controlli's realized technology. The double lit, variable LED arrangement in combination with a C-MOS sensor and telecentric lens produces the most accurate lighting system available.

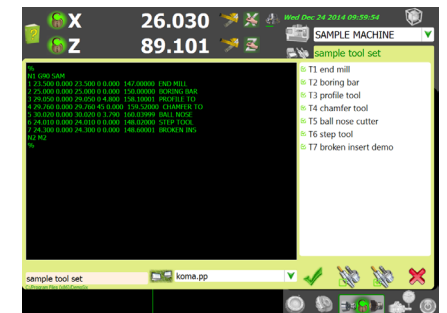
## NEW



## NEW

### USER FRIENDLY INTERFACE

ergonomic design combined with a 15" TFT LCD Touch Screen. This system provides full operator control and selection of options and functions via an intuitive icon system allowing operational and functional simplicity that is second to none..



### POWERFUL COMPUTING SYSTEM

#### Tool Data Management

This powerful new operating system utilizing a Linux OS, features state-of-the-art tool measuring, inspection and data management solutions. Elbo Controlli's presetters increase efficiency, reduce down time and are supported by extensive applications, technical support, and a global service network.