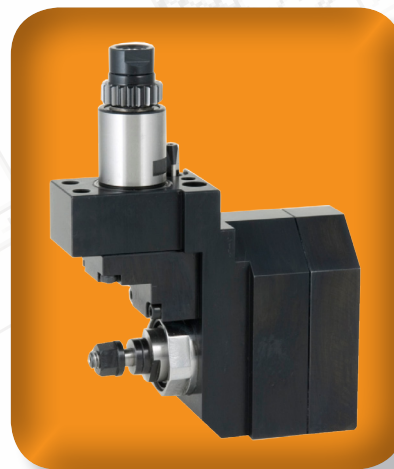


# SWISS TOOLING

## **NEXTURN**

SWISS TURN LEADER



20 Thompson Rd | East Windsor | CT 06088  
1.800.249.5662 | 860.623.4132 Fax  
[www.komaprecision.com](http://www.komaprecision.com) | [info@komaprecision.com](mailto:info@komaprecision.com)

## KOMA PRECISION has the FINEST the world has to offer in machine tool Productivity Innovation

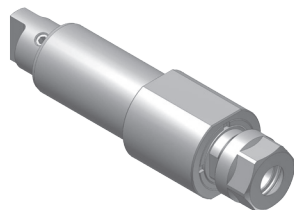
*KOMA Precision is the foremost source for the finest the world has to offer in machine tool Productivity Innovation. For over 30 years Koma has been providing superior service and knowledge to match machine with client.*

Koma precision is the largest distributor of NC rotary tables and indexers in the world with over 30,000 rotary table installations. Koma is also the worlds largest supplier for Alberti (the originator and the foremost innovator of productivity tooling) with over 12,000 angle heads and live tools installed.



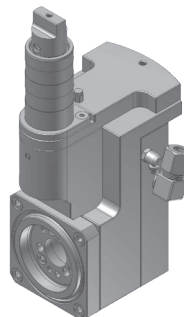
*Our 25,000 sq. ft. facility features a completely equipped machine shop, state of the art inspection equipment, a product demonstration showroom, and a multi-million dollar new product and spare parts inventory.*

## SA20D/SA32D TOOLING FOR GANG TOOL POST



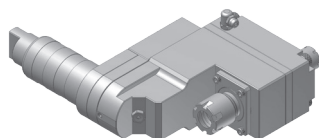
**NTA246100**  
Cross drilling/milling  
unit

RATIO 1 : 1  
RPM(MAX) 6000  
TOOL CLAMPING ER16A



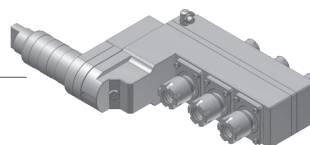
**NTA260100**  
Thread whirling unit

RATIO 1 : 1  
RPM(MAX) 6000  
THREAD(MAX) M12  
HELIX ANGLE  $\pm 20^\circ$



**NTA566100**  
1 spindle drilling/milling unit

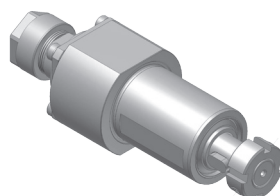
RATIO 1 : 1  
RPM(MAX) 6000  
TOOL CLAMPING  
Front side : ER16  
Back side : ER11M



**NTA566300**  
3 spindle drilling/milling unit

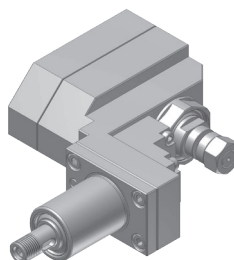
RATIO 1 : 1  
RPM(MAX) 6000  
TOOL CLAMPING  
Front side : ER16M  
Back side : ER11M

## SA20D TOOLING FOR BACK TOOL POST



**NTA741100**  
Drilling/milling unit

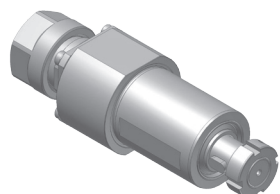
RATIO 1 : 1  
RPM(MAX) 8000  
TOOL CLAMPING ER11A



**NTA730100-20**  
Slotting unit

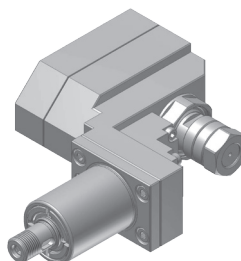
RATIO 1 : 0.55  
RPM(MAX) 4000  
SAW OD(MAX)  $\varnothing 50$  mm  
SAW ARBOR SHANK  $\varnothing 8.0$  mm

## SA32D TOOLING FOR BACK TOOL POST



**NTA746100**  
Drilling/milling unit

RATIO 1 : 1  
RPM(MAX) 8000  
TOOL CLAMPING ER16A



**NTA730100-32**  
Slotting unit

RATIO 1 : 0.55  
RPM(MAX) 4000  
SAW OD(MAX)  $\varnothing 50$   
SAW ARBOR SHANK  $\varnothing 12.0$   $12.7$   $13.0$



20 Thompson Rd | East Windsor | CT 06088  
1.800.249.5662 | 860.623.4132 Fax  
[www.komaprecision.com](http://www.komaprecision.com) | [info@komaprecision.com](mailto:info@komaprecision.com)

ROTARY TABLES | ANGLE HEADS | LIVE TOOLS | SWISS TOOLS | TOOL PRESETTERS | PROBING SYSTEMS