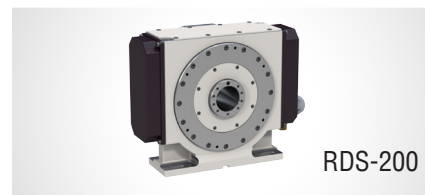


RDS-200

DIRECT DRIVE SYSTEM

The RDS Series utilizes Tsudakoma's proprietary direct drive motor system enabling the rotary table to achieve high speed and acceleration with no backlash. The new direct drive rotary tables feature a slim low profile build that makes it very suitable for mass production and high speed indexing operations in the automotive, medical and computer/electronic manufacturing industries.



Specifications ►

Model		RDS-200
Spindle diameter		83H7
Center height		160
Center bore	Nose Diameter	55H7
	Thru Diameter	45H7
Servo motor*		TSUDA-02
Speed reduction ratio		1/1
Maximum table speed		rpm 300
Clamp system		Pneumatic
Clamp torque @72psi		Nm (ft. lbs.) 600 (443)
Indexing accuracy		arc sec. ±10
Indexing repeatability		arc sec. ±2
Net Weight		kg (lbs.) 65 (144)
Allowable work weight	kg (lbs)	100 (220)

* Other motors & rpm available • Dimensions = mm
Specifications subject to change without notice

Dimensions

Drawings not to scale • Dimensions = mm

RDS-200

