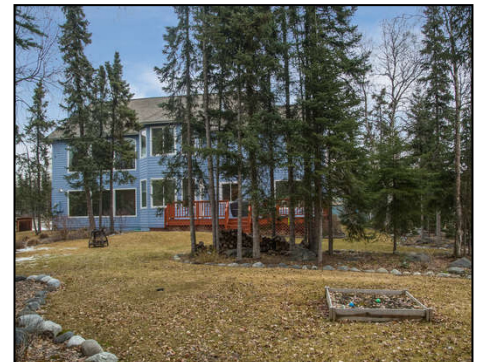


Convenient Park-Like Setting!



9398 Autumn Ridge Cir.

4 Bedrooms | 3.5 Baths | 4,070+ SQ FT | 3 Car Garage

Exclusive Autumn Ridge subdivision boasts easy access to hospitals and so much more! Service and Trailside schools just across Abbott for family convenience. Hill Top trails weave behind Service High School. Located on almost an acre interior lot, home is away from the noise of Abbott Road. Extensive landscaping creates a park-like sense of privacy, for kids to play. The spacious, flat driveway is great for guests and seasonal RV parking.

Pride of ownership evident throughout with this must see interior! Main level home office or study with built-ins to organize work. Fully-equipped kitchen next to 2-story family room. Large windows flood the home with natural light and bring the feeling of the outdoor inside.

All bedrooms upstairs with ceiling fans & blackout shades. Master suite boats all the amenities needed to relax after a long day. Other bedrooms face east and allow you to witness the Northern Lights dancing along the Mountains ridges and across the sky.

For more information go to *Properties* at www.ramseyteam.com

RE/MAX
Dynamic Properties

3350 Midtown Place
Anchorage, AK 99503



**Barbara &
Clair Ramsey**

call: (907)261-7553
info@ramseyteam.com



www.ramseyteam.com